



***SHINKO***  
**MOTORCYCLE TIRES**



# THE SHINKO STORY

Established in Osaka, Japan in 1946, the Shinko Group started manufacturing motorcycle tires and tubes and has been offering a variety of rubber products including tires for 2 wheelers for the past 70 years.

The Group established a tire and tube manufacturing company in Jinju, Korea in 1973. After forming a technological alliance with Yokohama Tires in 1996 the company received Highspeed and Radial tire technologies and development facilities and combined Japanese design technologies and Korea's production and quality management capabilities.

The company then started producing Radial tires in the name of Shinko Tires for the first time in Korea and is now supplying tires to more than 50 countries around the world. The company has acquired the KS Mark, E Mark, as well as ISO9001 and ISO14001 certificates, and is constantly striving to offer the highest level of quality to its customers. Currently, Shinko Tires manufactures about 200,000 units of motorcycle tires every month.



SR999 Long Haul



The SR999 Long Haul Tire was developed for cruiser riders looking for exceptional tread life and performance. Enjoy the long journey with these tires. The Shinko SR999 is optimized to long haul travels.

- New compound for exceptional tread life and grip.
- Functional tread grooves for superior traction in various types of road surfaces.
- Reinforced carcass for enhanced stability.
- Special belts that offer excellent stability and load capacity.



FRONT



REAR

✓ Product Features and Characteristics of the Pattern

- All-new rubber compound for higher abrasion resistance
- Wide center groove for longer mileage and enhanced comfort
- Carefully selected tread patterns, groove structure and sidewall for exceptional performance
- Highly durable materials for enhanced stability

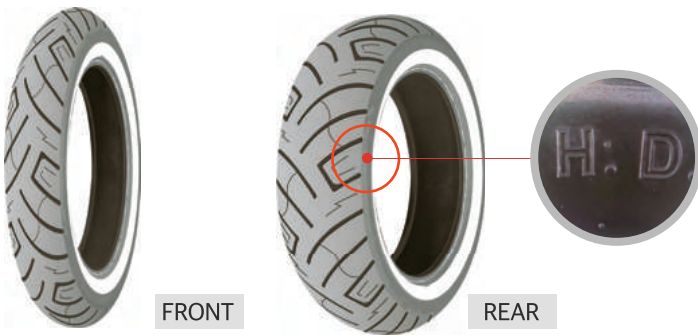
Model No.	Tire Size	Load Index	Speed Symbol	Rim Size	Diameter	Width	DOT	Ply Rating	Front / Rear	Tube	Maximum Load (kg)	Maximum Air Pressure (PSI)
SR999F	110/90-19	62	H	2.50	26.85	4.33	Y	4	F	T/L	265	41
SR999F	80/90-21	54	H	1.85	26.73	3.27	Y	6	F	T/L	212	42
SR999F	130/80B17	65	H	3.00	25.28	5.24	Y	4	F	T/L	290	40
SR999F	120/70B21	68	V	3.50	27.72	4.84	Y	6	F	T/L	315	42
SR999F	130/70B18	69	H	3.50	25.16	5.08	Y	6	F	T/L	325	42
SR999F	130/60B19	67	H	3.50	25.20	5.08	Y	6	F	T/L	307	42
SR999F	100/90-19	61	H	2.50	26.06	4.09	Y	6	F	T/L	257	42
SR999F	130/90B16	73	H	3.00	25.20	5.31	Y	6	F	T/L	365	49
SR999R	180/70B15	82	H	5.00	25.12	7.17	Y	6	R	T/L	475	42
SR999R	150/90B15	80	H	3.50	25.59	5.98	Y	6	R	T/L	450	42
SR999R	170/70-16	75	H	4.50	25.39	6.69	Y	4	R	T/L	387	41
SR999R	140/90B16	77	H	3.50	25.98	5.67	Y	6	R	T/L	412	42
SR999R	170/80B15	83	H	4.00	25.79	6.77	Y	6	R	T/L	487	42
SR999R	160/70B17	79	H	4.50	25.91	6.42	Y	6	R	T/L	437	42
SR999R	130/90B16	73	H	3.00	25.28	5.24	Y	6	R	T/L	365	49
SR999R	180/55B18	84	H	5.50	25.91	7.01	Y	6	R	T/L	500	42
SR999R	MU85B16	77	H	3.50	25.98	5.67	Y	6	R	T/L	412	40
SR999R	150/80B16	77	H	3.50	25.51	5.91	Y	6	R	T/L	412	42
SR999R	180/65B16	81	H	5.00	25.16	7.20	Y	6	R	T/L	462	49

SR777 White Wall Series

New pattern developed for cruisers



The SR777 White Wall Series was specifically developed for cruisers and is available in a variety of sizes for V-twins, metric cruisers and many other types of cruisers.



FRONT

REAR

✓ Features include

- White sidewall (WW)
- Excellent mileage and load capacity
- 6-ply heavy duty (H.D) version with reinforced carcass
- Speed Symbol: H&V, tubeless, 4-ply or 6-ply

Model No.	Tire Size	Load Index	Speed Symbol	Rim Size	Diameter	Width	DOT	Ply Rating	Front / Rear	Tube	Maximum Load (kg)	Maximum Air Pressure (PSI)
SR777	120/70-21 W/W	68	V	3.50	27.60	4.80	Y	6	F	T/L	315	42
SR777	150/80B16 W/W	77	H	3.50	25.43	5.91	Y	6	R	T/L	412	42
SR777	90/90-21 W/W	54	H	2.15	27.36	3.54	Y	4	F	T/L	212	42
SR777	100/90-19 W/W	61	H	2.50	26.10	3.98	Y	6	F	T/L	257	42
SR777	130/90B16 W/W	73	H	3.00	25.20	5.08	Y	6	F	T/L	365	49
SR777	140/80-17 W/W	69	H	3.50	25.83	5.59	Y	4	F	T/L	325	42
SR777	130/80-17 W/W	65	H	3.00	25.20	5.08	Y	4	F	T/L	290	42
SR777	130/90B16 W/W	73	H	3.00	25.20	5.08	Y	6	R	T/L	365	49
SR777	150/80-16 W/W	71	H	3.50	25.43	5.91	Y	4	F	T/L	345	42
SR777	170/80B15 W/W	83	H	4.00	25.71	6.69	Y	6	R	T/L	487	42
SR777	150/90B15 W/W	80	H	3.50	25.63	5.91	Y	6	R	T/L	450	42
SR777	170/70-16 W/W	75	H	4.50	25.28	6.61	Y	4	R	T/L	387	42
SR777	180/65B16 W/W	81	H	5.00	25.20	7.09	Y	6	R	T/L	462	49
SR777	130/60B19 W/W	67	H	3.50	25.16	5.08	Y	6	F	T/L	307	42
SR777	180/55B18 W/W	84	H	5.50	25.79	7.01	Y	6	R	T/L	500	42
SR777	MU85B16 W/W	77	H	3.50	25.92	5.60	Y	6	R	T/L	412	40
SR777	160/70-17 W/W	79	H	4.50	25.83	6.34	Y	6	R	T/L	437	42
SR777	130/70B18 W/W	69	H	3.50	25.16	5.08	Y	6	F	T/L	325	42
SR777	130/60-23 W/W	75	H	3.50	29.13	5.08	Y	6	F	T/L	387	42
SR777	180/70B15 W/W	82	H	5.00	24.92	7.09	Y	6	R	T/L	472	42
SR777	140/70B18 W/W	72	H	3.75	25.71	5.47	Y	6	R	T/L	355	42
SR777	150/70B18 W/W	76	H	4.25	26.26	5.94	Y	6	R	T/L	400	42
SR777	120/90-17 W/W	64	H	2.75	25.75	4.80	Y	4	F	T/L	280	42
SR777	180/60B17 W/W	81	V	5.00	25.51	7.28	Y	6	R	T/L	462	42



## SR777 All Black Series

New pattern developed for cruisers



The SR777 Black Wall Series was specifically developed for cruisers and is available in a variety of sizes for V-twins, metric cruisers and many other types of cruisers.



FRONT



REAR

### ✓ Features include

- Excellent mileage and load capacity
- 6-ply heavy duty (H.D) version with reinforced carcass
- Speed Symbol: H&V, tubeless, 4-ply or 6-ply
- Available in radial and a variety of sizes

Model No.	Tire Size	Load Index	Speed Symbol	Rim Size	Diameter	Width	DOT	Ply Rating	Front / Rear	Tube	Maximum Load (kg)	Maximum Air Pressure (PSI)
SR777	120/70-21	68	V	3.50	27.60	4.80	Y	6	F	T/L	315	42
SR777	130/60-23	75	H	3.50	29.13	5.08	Y	6	F	T/L	387	42
SR777	MU85B16	77	H	3.50	25.92	5.60	Y	6	R	T/L	412	40
SR777	120/50-26	73	H	3.50	30.83	4.72	Y	6	F	T/L	365	42
SR777	150/80B16	77	H	3.50	25.43	5.91	Y	6	R	T/L	412	42
SR777	80/90-21	54	H	1.85	26.65	3.15	Y	6	F	T/L	212	42
SR777	90/90-21	54	H	2.15	27.36	3.54	Y	4	F	T/L	212	42
SR777	100/90-19	61	H	2.50	26.10	3.98	Y	6	F	T/L	257	42
SR777	110/90-19	62	H	2.50	26.81	4.29	Y	4	F	T/L	265	42
SR777	120/90-17	64	H	2.75	25.51	4.69	Y	4	F	T/L	280	42
SR777	120/90-18	65	H	2.75	26.50	4.69	Y	4	F	T/L	290	42
SR777	130/90B16	73	H	3.00	25.20	5.08	Y	6	F	T/L	365	49
SR777	140/80-17	69	H	3.50	25.83	5.59	Y	4	F	T/L	325	42
SR777	130/80-17	65	H	3.00	25.20	5.08	Y	4	F	T/L	290	42
SR777	130/90B16	73	H	3.00	25.20	5.08	Y	6	R	T/L	365	49
SR777	140/90B16	77	H	3.50	25.91	5.59	Y	6	R	T/L	412	42
SR777	150/80-16	71	H	3.50	25.43	5.91	Y	4	F	T/L	345	42
SR777	170/80B15	83	H	4.00	25.71	6.69	Y	6	R	T/L	487	42
SR777	150/90B15	80	H	3.50	25.63	5.91	Y	6	R	T/L	450	42
SR777	160/80-15	74	H	3.75	25.08	6.38	Y	4	R	T/L	375	42
SR777	170/70-16	75	H	4.50	25.28	6.61	Y	4	R	T/L	387	42
SR777	180/65B16	81	H	5.00	25.20	7.09	Y	6	R	T/L	462	49
SR777	130/60B19	67	H	3.50	25.16	5.08	Y	6	F	T/L	307	42
SR777	180/55B18	84	H	5.50	25.79	7.01	Y	6	R	T/L	500	42
SR777	160/70-17	79	H	4.50	25.83	6.34	Y	6	R	T/L	437	42
SR777	130/70B18	69	H	3.50	25.16	5.08	Y	6	F	T/L	325	42
SR777	140/40-30	57	H	4.00	35.12	5.35	Y	6	F	T/L	230	36
SR777	180/70B15	82	H	5.00	24.92	7.09	Y	6	R	T/L	475	42
SR777	180/55R17	73	V	5.50	24.8	7.00	Y	4	R	T/L	365	42
SR777	140/70B18	72	H	3.75	25.71	5.47	Y	6	R	T/L	355	42
SR777	150/70B18	76	H	4.25	26.26	5.94	Y	6	R	T/L	400	42
SR777	140/75R15	65	V	3.50	23.19	5.79	Y	4	R	T/L	290	42
SR777	200/55R17	78	V	6.25	25.67	7.87	Y	4	R	T/L	425	42
SR777	180/60B17	81	V	5.00	25.51	7.28	Y	6	R	T/L	462	42
SR777	MT90B16	72	H	3.00	25.59	5.12	Y	4	F	T/L	355	36
SR777	160/60R18	70	V	4.50	25.55	6.34	Y	4	F	T/L	335	42
SR777	240/40R18	79	V	8.50	25.55	9.45	Y	4	R	T/L	437	42

**SR777 Reflector Series**

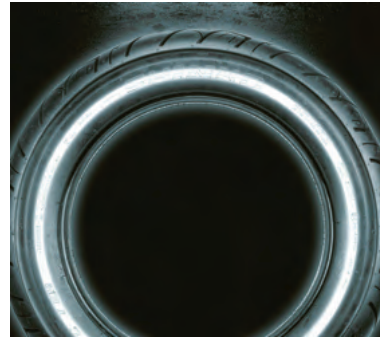
New pattern developed for cruisers



FRONT



REAR



✓ **Revolutionary motorcycle tire technology. We introduce to you the SR777 Reflector tires.**

- The reflective material of the sidewall reflects light.
- Safe and excellent visibility!
- 777 heavy duty tires with reinforced carcass for increased mileage and load capacity.
- Special belts increased load capacity, stability and durability.
- The SR777 Reflector tires have been specifically designed for cruisers and they offer outstanding safety to riders.
- **Excellent mileage and load capacity**
- **6-ply heavy duty (H.D) version with a reinforced carcass**
- **Speed Symbol: H, tubeless, 6-ply**

Model No.	Tire Size	Load Index	Speed Symbol	Rim Size	Diameter	Width	DOT	Ply Rating	Front / Rear	Tube	Maximum Load (kg)	Maximum Air Pressure (PSI)
SR777	100/90-19 REF	61	H	2.50	26.10	3.98	Y	6	F	T/L	257	42
SR777	130/90B16 REF	73	H	3.00	25.20	5.08	Y	6	R	T/L	365	49
SR777	150/80B16 REF	77	H	3.50	25.43	5.91	Y	6	R	T/L	412	42
SR777	180/65B16 REF	81	H	5.00	25.20	7.09	Y	6	R	T/L	462	49
SR777	130/80-17 REF	65	H	3.00	25.50	5.08	Y	4	F	T/L	290	42
SR777	170/80B15 REF	83	H	4.00	25.71	6.69	Y	6	R	T/L	487	42
SR777	130/90B16 REF	73	H	3.00	25.20	5.08	Y	6	F	T/L	365	49

**F250 / R250 Series**

Directional tread design for excellent wet weather traction and stability.  
 The premium high-load material used in these tires also offers added stability.  
 The front tire's single-radius profile allows lighter steering and adds riding stability.  
 The rear tire's dual-radius profile with a large contact patch offers excellent traction and mileage.  
**Available in White Wall and Black Wall**



F250



F250W/W



R250



R250W/W

✓ **Features include**

- Special belts for increased stability during high load operations
- Available in White Wall
- Speed Symbol: H, tubeless

Model No.	Tire Size	Load Index	Speed Symbol	Rim Size	Diameter	Width	DOT	Ply Rating	Front / Rear	Tube	Maximum Load (kg)	Maximum Air Pressure (PSI)
F250	MT90-16	73	H	3.00	25.59	5.12	Y	4	F	T/L	365	41
F250	MJ90-19	56	H	2.15	25.59	3.50	Y	4	F	T/L	222	36
F250	MH90-21	56	H	1.85	27.01	3.15	Y	4	F	T/T	224	41
F250	MT90-16 W/W	73	H	3.00	25.59	5.12	Y	4	F	T/L	365	41
R250	MT90-16	74	H	3.00	25.59	5.12	Y	4	R	T/L	375	41
R250	MT90-16 W/W	74	H	3.00	25.59	5.12	Y	4	R	T/L	375	41



## 611F / 718R Series

The front 611F tire and rear 718R tire are directional tires. When used together, these tires offer exceptional traction in both wet and dry conditions.



FRONT



REAR

### ✓ Features include

- Special belts for increased stability during high load operations
- Speed Symbol: H, tubeless

Model No.	Tire Size	Load Index	Speed Symbol	Rim Size	Diameter	Width	DOT	Ply Rating	Front / Rear	Tube	Maximum Load (kg)	Maximum Air Pressure (PSI)
611F	MT90-16	71	H	3.00	25.59	5.12	Y	4	F	T/L	349	33
611F	MM90-19	61	H	2.15	26.10	3.74	Y	4	F	T/L	258	32
611F	MH90-21	56	H	1.85	27.01	3.15	Y	4	F	T/L	224	33
718R	MT90-16	74	H	3.00	25.59	5.12	Y	6(Reinf.)	R	T/L	375	40

## F230 / R230 Series

### Tour Master

Our goal was to make tires optimized to long distance and high load riding in wet or dry conditions. We've not only achieved this goal but we've also added a belted structure to improve handling and comfort. The groove depth is also optimized for on-road riding and it offers excellent comfort.

#### Long Haul Tires



FRONT



REAR

### ✓ Features include

- Optimal for long distance and high speed riding
- Special belts
- Tread design increases steering and comfort
- Speed Symbol: S, H or V, tubeless, 4-ply

Model No.	Tire Size	Load Index	Speed Symbol	Rim Size	Diameter	Width	DOT	Ply Rating	Front / Rear	Tube	Maximum Load (kg)	Maximum Air Pressure (PSI)
F230	130/90-16	67	V	3.00	25.20	5.08	Y	4	F	T/L	307	42
F230	120/90-18	65	V	2.75	26.50	4.69	Y	4	F	T/L	290	42
F230	3.00-18	47	S	1.85	24.69	3.15	Y	4	F	T/T	175	36
F230	100/90-19	57	V	2.50	26.10	3.98	Y	4	F	T/L	230	42
F230	100/90-18	56	V	2.50	25.08	3.98	Y	4	F	T/L	224	40
F230	110/90-18	61	V	2.50	25.79	4.29	Y	4	F	T/L	257	42
F230	110/90-19	62	V	2.50	26.81	4.29	Y	4	F	T/L	265	42
F230	150/80-16	71	H	3.50	25.43	5.91	Y	4	F	T/L	345	42
F230	80/90-21	48	H	1.85	26.65	3.15	Y	4	F	T/L	180	42
F230	150/80-17	72	H	3.50	26.46	5.91	Y	4	F	T/L	355	42
F230	120/90-17	64	H	2.75	25.51	4.69	Y	4	F	T/L	280	42
R230	130/90-15	66	V	3.00	24.21	5.08	Y	4	R	T/L	300	42
R230	140/90-15	76	V	3.50	24.92	5.59	Y	4	R	T/L	400	42
R230	150/90-15	80	V	3.50	25.63	5.91	Y	4	R	T/L	450	42
R230	170/80-15	83	V	4.00	25.71	6.69	Y	4	R	T/L	487	42
R230	130/90-16	73	V	3.00	25.20	5.08	Y	4	R	T/L	365	42
R230	140/90-16	77	V	3.50	25.91	5.59	Y	4	R	T/L	412	42
R230	130/90-17	74	V	3.00	26.22	5.08	Y	6	R	T/L	375	42
R230	120/90-18	71	V	2.75	26.50	4.69	Y	6	R	T/L	345	42
R230	130/90-18	69	V	3.00	27.20	5.08	Y	4	R	T/L	325	42
R230	180/70-15	76	H	5.00	24.92	7.09	Y	4	R	T/L	400	41
R230	150/80-16	71	H	3.50	25.40	5.90	Y	4	R	T/L	345	42

**SR712 Series**

The SR712 Series designed to perform effectively even in wet conditions offers exceptional mileage and performance.



✓ **Features include**

- Designed to offer exceptional mileage and performance
- Tread patterns that offer outstanding performance even in wet conditions
- Speed Symbol: H, 4 or 6-ply nylon carcass

Model No.	Tire Size	Load Index	Speed Symbol	Rim Size	Diameter	Width	DOT	Ply Rating	Front / Rear	Tube	Maximum Load (kg)	Maximum Air Pressure (PSI)
SR712F	100/90-18	56	H	2.50	25.08	3.98	Y	4	F	T/L	224	40
SR712F	100/90-19	57	H	2.50	26.10	3.98	Y	4	F	T/L	230	41
SR712F	110/90-19	62	H	2.50	26.81	4.29	Y	4	F	T/L	265	40
SR712F	120/80-16	60	H	2.75	23.54	4.69	Y	4	F	T/L	250	40
SR712F	3.00-18	55	H	1.85	24.69	3.15	Y	6	F	T/L	218	41
SR712R	100/90-18	56	H	2.50	25.08	3.98	Y	4	R	T/L	224	40
SR712R	110/90-18	61	H	2.50	25.79	4.29	Y	4	R	T/L	257	40
SR712R	120/90-18	65	H	2.75	26.50	4.69	Y	4	R	T/L	290	40
SR712R	130/90-16	67	H	3.00	25.20	5.08	Y	4	R	T/L	307	40
SR712R	130/90-17	68	H	3.00	26.22	5.08	Y	4	R	T/L	315	40
SR712R	140/90-15	70	H	3.50	24.92	5.59	Y	4	R	T/L	335	40
SR712R	150/70-17	69	H	4.25	25.28	5.94	Y	4	R	T/L	325	40
SR712R	170/80-15	77	H	4.00	25.71	6.69	Y	4	R	T/L	412	42
SR712R	3.50-18	60	H	2.15	25.55	3.66	Y	6	R	T/L	250	41

**SE890 Series**

**Journey Radial (Street / Cruiser)**

Special tread design that effectively disperses water in wet conditions.



✓ **Features include**

- Tubeless, DOT approved
- Speed Symbol: H (210Km/h)

Model No.	Tire Size	Load Index	Speed Symbol	Rim Size	Diameter	Width	DOT	Ply Rating	Front / Rear	Tube	Maximum Load (kg)	Maximum Air Pressure (PSI)
SE-890	130/70R18	63	H	3.50	25.16	5.08	Y	R	F	T/L	272	42
SE-890	150/80R17	72	H	3.50	26.46	5.95	Y	R	F	T/L	355	42
SE-890	180/60R16	74	H	5.00	24.49	7.03	Y	4	R	T/L	375	42
SE-890	180/70R16	77	H	5.00	25.91	7.03	Y	4	R	T/L	412	42
SE-890	160/80R16 6PR (Reinf)	81	H	3.75	26.06	6.06	Y	4	R	T/L	462	42
SE-890	200/55R16	77	H	6.25	24.41	8.23	Y	4	R	T/L	412	42



## SR733 / SR734 / SR735 Series

Popular touring and cruiser tread patterns. The front SR733 tire, rear SR734 tire and SR735 tire for both front and rear.



SR733



SR734



SR735

### ✓ Features include

- Popular touring and cruiser tread patterns
- 4-ply
- tubeless

Model No.	Tire Size	Load Index	Speed Symbol	Rim Size	Diameter	Width	DOT	Ply Rating	Front / Rear	Tube	Maximum Load (kg)	Maximum Air Pressure (PSI)
SR733	130/70-18	63	H	3.50	25.16	5.08	Y	4	F	T/L	272	41
SR733	100/90-19	57	H	2.50	26.10	3.98	Y	4	F	T/L	230	42
SR734	130/90-15	66	P	3.00	24.21	5.08	Y	4	F	T/L	300	33
SR734	150/80-15	70	S	3.50	24.45	5.91	Y	4	R	T/L	335	33
SR734	160/80-16	75	H	3.75	26.06	6.30	Y	4	R	T/L	387	41
SR734	170/80-15	77	H	4.00	25.71	6.69	Y	4	R	T/L	412	42
SR735	110/90-16	59	S	2.50	23.78	4.29	Y	4	B	T/L	243	33

## E240 Series

### "Classic 240" for Classic Motorcycles

Special compound for long mileage. The Breaker made with DuPont™ Kevlar® offsets tread distortion and offers exceptional grip and durability. Tread patterns with 90% aspect ration and classic features.

Available in White Wall (2 types) and Black Wall



E240 A/B



E240 W-1



E240 W-2

### ✓ Features include

- Classic design
- Modern structure and performance

Model No.	Tire Size	Load Index	Speed Symbol	Rim Size	Diameter	Width	DOT	Ply Rating	Front / Rear	Tube	Maximum Load (kg)	Maximum Air Pressure (PSI)
E240	MT90-16	74	H	3.00	25.59	5.12	Y	4	B	T/T	375	41
E240	MT90-16 W-1	74	H	3.00	25.59	5.12	Y	4	B	T/T	375	41
E240	MT90-16 W-2	74	H	3.00	25.59	5.12	Y	4	B	T/T	375	41
E240	100/90-19	63	H	2.50	26.10	3.98	Y	6	F	T/L	272	42
E240	100/90-19 W-1	63	H	2.50	26.10	3.98	Y	6	F	T/L	272	42

## E270 Series

### Super Classic 270

Classic design, full aspect ratio, sawtooth tread. 4-ply or 6-ply nylon carcass used for exceptional durability.

Available in White Wall (2 types) and Black Wall



E270 A/B



E270 W-1



E270 W-2

### ✓ Features

- Sawtooth tread and high aspect ratio
- Speed Symbol: S (180Km/h) or H (210Km/h)

Model No.	Tire Size	Load Index	Speed Symbol	Rim Size	Diameter	Width	DOT	Ply Rating	Front / Rear	Tube	Maximum Load (kg)	Maximum Air Pressure (PSI)
E270	5.00-16	72	H	3.00	26.38	5.12	Y	6	B	T/T	355	33
E270	5.00-16 W-1	72	H	3.00	26.38	5.12	Y	6	B	T/T	355	33
E270	4.00-19	61	H	2.15	27.40	4.10	Y	4	F	T/T	257	42
E270	4.00-19 W-2	61	H	2.15	27.40	4.10	Y	4	F	T/T	257	42
E270	4.00-19 W-1	61	H	2.15	27.40	4.10	Y	4	F	T/T	257	42
E270	5.00-16 W-2	72	H	3.00	26.38	5.12	Y	4	B	T/T	325	33
E270	4.00-18	64	H	2.15	26.42	4.09	Y	4	B	T/T	280	41
E270	4.00-18 W-1	64	H	2.15	26.42	4.09	Y	4	B	T/T	280	41
E270	4.50-18	70	H	2.15	27.20	4.37	Y	4	B	T/T	335	41
E270	4.50-18 W-1	70	H	2.15	27.20	4.37	Y	4	B	T/T	335	41
E270	3.00-21 W-1	57	S	1.85	27.68	3.15	Y	6	F	T/T	230	41
E270	3.00-21	57	S	1.85	27.68	3.15	Y	6	F	T/T	230	41

O16 Series

Verge 2X Radial (Sport Tire) - JLSB (Steel-Belted Sport Radial)



The Shinko O16 Radial Tires are dual compound performance tires equipped with a high-mileage compound at the center of the tread for enhanced durability and an advanced grip compound in the shoulders. The tires (front & rear) use the cutting-edge JLSB technology. The tires' excellent profile and water displacement offer added stability and strength.



FRONT



REAR



Steel Cord

✓ JLSB (Joint Less Steel Belted)

0° STEEL-BELTED SPORT RADIAL TIRE FEATURES ZERO DEGREE JLSB (Joint-Less Steel Belted) state-of-the-art technology for added stability and strength

Model No.	Tire Size	Load Index	Speed Symbol	Rim Size	Diameter	Width	DOT	Ply Rating	Front / Rear	Tube	Maximum Load (kg)	Maximum Air Pressure (PSI)
F016	120/60ZR17	55	(W)	3.50	22.68	4.80	Y	R	F	T/L	218	42
F016	120/70ZR17	58	(W)	3.50	23.62	4.80	Y	R	F	T/L	236	42
R016	180/55ZR17	73	(W)	5.50	24.80	7.01	Y	R	R	T/L	365	42
R016	190/50ZR17	73	(W)	6.00	24.49	7.48	Y	R	R	T/L	365	42
R016	200/50ZR17	75	(W)	6.25	24.88	7.87	Y	R	R	T/L	387	42
R016	160/60ZR17	69	(W)	4.50	24.57	6.34	Y	R	R	T/L	325	42
R016	190/55ZR17	75	(W)	6.00	25.28	7.48	Y	R	R	T/L	387	42



## 010 Series

### Apex Radial

We(Shinko) introduce a tread designed for serious sportbike riding with the new 010 APEX RADAIL. The 010 APEX RADIAL rear tire features Zero Degree JLSB(Joint-Less Steel Belted) state-of-the-art technology for added stability and strength, while the 010 Apex front tire is Aramid belted for enhanced high-speed performance.



FRONT



REAR

Model No.	Tire Size	Load Index	Speed Symbol	Rim Size	Diameter	Width	DOT	Ply Rating	Front / Rear	Tube	Maximum Load (kg)	Maximum Air Pressure (PSI)
F010	120/60ZR17	55	(W)	3.50	22.68	4.80	Y	R	F	T/L	218	42
F010	120/70ZR17	58	(W)	3.50	23.62	4.80	Y	R	F	T/L	236	42
R010	150/60ZR17 JLSB	66	(W)	4.25	24.09	5.94	Y	R	R	T/L	300	42
R010	160/60ZR17 JLSB	69	(W)	4.50	24.57	6.34	Y	R	R	T/L	325	42
R010	170/60ZR17 JLSB	72	(W)	4.50	25.04	6.61	Y	R	R	T/L	355	42
R010	180/55ZR17 JLSB	73	(W)	5.50	24.80	7.01	Y	R	R	T/L	365	42
R010	190/50ZR17 JLSB	73	(W)	6.00	24.49	7.48	Y	R	R	T/L	365	42
R010	190/55ZR17 JLSB	75	(W)	6.00	25.28	7.48	Y	R	R	T/L	387	42
R010	200/50ZR17 JLSB	75	(W)	6.25	24.88	7.87	Y	R	R	T/L	387	42

## 011 Series

### Verge Radial

Our(Shinko) Tire brings you performance combined with extended tread life in the all-new 011 VERGE RADIAL, which is designed specifically for sport/touring riding. The 011 Verge rear features Zero Degree JLSB(Joint-Less Steel Belted) state-of-the-art technology for added stability and strength, while the 011 front tire is Aramid belted for enhanced high-speed performance. The 011 also features a tread radius designed for enhance high speed cornering.



FRONT



REAR

#### ✓ Features include

- Excellent grip and tread life
- Tread Radius: Added high-speed cornering performance
- Speed Symbol: W (168 mph)

Model No.	Tire Size	Load Index	Speed Symbol	Rim Size	Diameter	Width	DOT	Ply Rating	Front / Rear	Tube	Maximum Load (kg)	Maximum Air Pressure (PSI)
F011	120/60ZR17	55	(W)	3.50	22.68	4.80	Y	R	F	T/L	218	42
F011	120/70ZR17	58	(W)	3.50	23.62	4.80	Y	R	F	T/L	236	42
F011	120/70ZR18	59	(W)	3.50	24.61	4.80	Y	R	F	T/L	243	42
F011	130/60R23	65	V	3.50	29.13	5.08	Y	R	F	T/L	290	42
F011	140/75VR17	67	(V)	3.50	25.28	5.47	Y	R	F	T/L	307	42
R011	160/60ZR17 JLSB	69	(W)	4.50	24.57	6.34	Y	R	R	T/L	325	42
R011	170/60ZR17 JLSB	72	(W)	4.50	25.04	6.61	Y	R	R	T/L	355	42
R011	180/55ZR17 JLSB	73	(W)	5.50	24.80	7.01	Y	R	R	T/L	365	42
R011	190/50ZR17 JLSB	73	(W)	6.00	24.49	7.48	Y	R	R	T/L	365	42
R011	200/50ZR17 JLSB	75	(W)	6.25	24.88	7.87	Y	R	R	T/L	387	42
R011	200/50R18 JLSB	76	V	6.25	25.87	7.87	Y	R	R	T/L	400	42
R011	300/35VR18 JLSB	87	(V)	10.50	26.26	11.77	Y	R	R	T/L	545	42
R011	200/55VR17 JLSB	78	(V)	6.25	25.67	7.87	Y	R	R	T/L	425	42
R011	150/80ZR16 JLSB	71	(W)	3.50	25.43	5.90	Y	R	R	T/L	345	42

**003 Series**

**Stealth & Ultra Soft Stealth Radial**

The near slick dimple design has remained popular with drag racers, production racers and the serious sport rider. Compounded for rapid warm up for slick like performance  
**AVAILABLE IN ULTRA SOFT COMPOUND**



FRONT



REAR

Model No.	Tire Size	Load Index	Speed Symbol	Rim Size	Diameter	Width	DOT	Ply Rating	Front / Rear	Tube	Maximum Load (kg)	Maximum Air Pressure (PSI)
F003	120/60ZR17	55	W	3.50	22.68	4.80	Y	R	F	T/L	218	42
F003	120/70ZR17	58	W	3.50	23.62	4.80	Y	R	F	T/L	236	42
F003	120/60ZR17 U-SOFT	55	W	3.50	22.68	4.80	Y	R	F	T/L	218	42
F003	120/70ZR17 U-SOFT	58	W	3.50	23.62	4.80	Y	R	F	T/L	236	42
R003	150/60ZR17	66	W	4.25	24.09	5.94	Y	R	R	T/L	300	42
R003	170/60ZR17	72	W	4.50	25.04	6.61	Y	R	R	T/L	355	42
R003	180/55ZR17	73	W	5.50	24.80	7.01	Y	R	R	T/L	365	42
R003	180/55ZR18	74	W	5.50	25.79	7.01	Y	R	R	T/L	375	42
R003	190/50ZR17	73	W	6.00	24.49	7.48	Y	R	R	T/L	365	42
R003	200/50ZR17	75	W	6.25	24.88	7.87	Y	R	R	T/L	387	42
R003	160/60ZR17	69	W	4.50	24.57	6.34	Y	R	R	T/L	325	42
R003	150/80ZR16 U-SOFT	71	W	3.50	25.43	5.91	Y	R	R	T/L	345	42
R003	180/55ZR17 U-SOFT	73	W	5.50	24.80	7.01	Y	R	R	T/L	365	42
R003	190/50ZR17 U-SOFT	73	W	6.00	24.49	7.48	Y	R	R	T/L	365	42
R003	200/50ZR17 U-SOFT	75	W	6.25	24.88	7.87	Y	R	R	T/L	387	42

**005 Series**

**Advance Radial**



FRONT



REAR

✓ **Features include**

- Large block-type tread patterns for outstanding braking, cornering and acceleration performance
- Special compound for added grip and durability
- Tread grooves, width and angle allow the tires to drain water effectively in wet conditions
- Special belts designed for high-speed riding
- 120/70-21: Bias tire

Model No.	Tire Size	Load Index	Speed Symbol	Rim Size	Diameter	Width	DOT	Ply Rating	Front / Rear	Tube	Maximum Load (kg)	Maximum Air Pressure (PSI)
F005	120/60ZR17	55	W	3.50	22.67	4.80	Y	R	F	T/L	218	42
F005	120/70ZR17	58	W	3.50	23.43	4.96	Y	R	F	T/L	236	42
F005	120/70-21	62	V	3.50	27.60	4.80	Y	4	F	T/L	265	42
F005	130/70R18	63	V	3.50	25.16	5.08	Y	R	F	T/L	272	42
R005	160/60ZR17	69	W	4.50	24.57	6.34	Y	R	R	T/L	325	42
R005	170/60ZR17	72	W	4.50	25.04	6.61	Y	R	R	T/L	355	42
R005	180/55ZR17	73	W	5.50	24.80	7.01	Y	R	R	T/L	365	42
R005	190/50ZR17	73	W	6.00	24.49	7.48	Y	R	R	T/L	365	42
R005	200/50ZR17	75	W	6.25	24.88	7.87	Y	R	R	T/L	387	42
R005	240/40R18	79	V	8.50	25.55	9.45	Y	R	R	T/L	437	42



## 009 Series

### Raven Radial

The 009 series, specially developed to meet the demand for long life high performance radial tires, is highly recommended for long distance touring where tire wear is crucial. New construction provides superior riding comfort, while its new tread compound gives high grip on both dry and wet roads, Easy steering and superb cornering performance.



FRONT



REAR

Model No.	Tire Size	Load Index	Speed Symbol	Rim Size	Diameter	Width	DOT	Ply Rating	Front / Rear	Tube	Maximum Load (kg)	Maximum Air Pressure (PSI)
F009	120/60ZR17	55	W	3.50	22.68	4.80	Y	R	F	T/L	218	42
F009	120/70ZR17	58	W	3.50	23.62	4.80	Y	R	F	T/L	236	42
R009	160/60ZR17	69	W	4.50	24.57	6.34	Y	R	R	T/L	325	42
R009	170/60ZR17	72	W	4.50	25.04	6.61	Y	R	R	T/L	355	42
R009	180/55ZR17	73	W	5.50	24.80	7.01	Y	R	R	T/L	365	42
R009	190/50ZR17	73	W	6.00	24.49	7.48	Y	R	R	T/L	365	42
R009	200/50ZR17	75	W	6.25	24.88	7.87	Y	R	R	T/L	387	42

## R003A Series

### Hook-Up & Hook-Up Pro Drag Radial (Sport Tire)

HOOK UP DRAG RADIAL rear tire features an all-new lightweight Aramid belted carcass with the softest compound available from Shinko. With a tread pattern and profile designed specifically for the demands of drag racing, the Shinko Drag Radial is the ultimate DOT drag tire. Combine the HOOK UP DRAG RADIAL with a Shinko 003 stealth front tire for a matching tread pattern.

All of the great features of the original Hook-up, but lighter faster, and now even better at the top-end of the track.

The Hook-Up PRO's competition-developed design, allows for more horsepower to be used throughout the run due to a large contact patch at high speed.

Enhanced carcass resists distortion, chunking, and the stresses of centrifugal force to maintain a more constant footprint.

**Recommended for drag race use only**



#### ✓ Features include

- Lighter, belted carcass
- Softest compound in the market
- Outstanding compatibility with the front 003 Stealth Tire
- Pro: Lighter and faster

Model No.	Tire Size	Load Index	Speed Symbol	Rim Size	Diameter	Width	DOT	Ply Rating	Front / Rear	Tube	Maximum Load (kg)	Maximum Air Pressure (PSI)
R003A	180/55ZR17	73	W	5.50	24.80	7.01	Y	R	R	T/L	365	42
R003A	190/50ZR17	73	W	6.00	24.49	7.48	Y	R	R	T/L	365	42
R003A	200/50ZR17	75	W	6.25	24.88	7.87	Y	R	R	T/L	387	42
R003A	190/50ZR17 PRO	73	W	6.00	24.49	7.48	Y	R	R	T/L	365	42
R003A	200/50ZR17 PRO	75	W	6.25	24.88	7.87	Y	R	R	T/L	387	42

**SR880[Front] / SR881[Back] Series**

Designed to offer superior durability and traction in all weather conditions.



880 FRONT



881 REAR

✓ **Features include**

- Patterns designed to offer superior durability and traction in all weather conditions
- Medium compound offers excellent traction and tread life
- Speed Symbol: W (270Km/h), DOT approved

Model No.	Tire Size	Load Index	Speed Symbol	Rim Size	Diameter	Width	DOT	Ply Rating	Front / Rear	Tube	Maximum Load (kg)	Maximum Air Pressure (PSI)
SR880	130/60ZR16	58	W	3.50	22.13	5.08	Y	4	F	T/L	236	41
SR880	110/70R17	54	V	3.00	23.07	4.33	Y	4	F	T/L	212	42
SR881	160/60ZR16	68	W	4.50	23.54	6.34	Y	4	R	T/L	315	41
SR881	140/70R17	66	V	3.75	24.72	5.47	Y	4	R	T/L	300	42

**SR740 / SR741 Series**

Tread designed to effectively disperse water on wet roads. The series includes the front SR740 and rear SR741.



740 FRONT



741 REAR

✓ **Features include**

- 4-ply
- Tubeless, DOT approved
- Speed Symbol : H (210km/h) or V (240km/h)

Model No.	Tire Size	Load Index	Speed Symbol	Rim Size	Diameter	Width	DOT	Ply Rating	Front / Rear	Tube	Maximum Load (kg)	Maximum Air Pressure (PSI)
SR740	110/70-17	54	H	3.00	23.07	4.33	Y	4	F	T/L	212	40
SR740	110/80-17	58	V	2.50	23.94	4.29	Y	4	F	T/L	236	42
SR740	100/80-16	50	H	2.50	22.28	3.98	Y	4	F	T/L	190	42
SR741	150/70-17	69	H	4.25	25.28	5.94	Y	4	R	T/L	325	40
SR741	140/70-17	66	H	3.75	24.72	5.47	Y	4	R	T/L	300	42
SR741	140/90-18	63	V	4.00	25.71	5.47	Y	4	R	T/L	272	42
SR741	130/80-16	64	H	3.00	24.17	5.08	Y	4	R	T/L	280	42
SR741	130/70-17	62	H	3.50	24.17	5.08	Y	4	R	T/L	265	42

**SR780 / SR781 Series**



780 FRONT



781 REAR

✓ **Features include**

- On-Road bias
- Outstanding comfort and stability

Model No.	Tire Size	Load Index	Speed Symbol	Rim Size	Diameter	Width	DOT	Ply Rating	Front / Rear	Tube	Maximum Load (kg)	Maximum Air Pressure (PSI)
SR780	110/70-17	58	H	3.00	22.95	4.17	Y	4	F	T/L	236	42
SR780	80/90-17	44	P	1.85	22.68	3.15	Y	4	F	T/L	160	33
SR780	90/80-17	46	P	2.15	22.68	3.54	Y	4	F	T/L	170	33
SR780	100/80-17	52	H	2.50	23.31	3.98	Y	4	F	T/L	200	42
SR780	90/90-21	54	H	2.15	27.36	3.54	Y	4	F	T/L	212	42
SR780	70/90-17	38	P	1.60	21.97	2.72	Y	4	F	T/L	132	33
SR781	130/70-17	62	H	3.50	24.44	5.07	Y	4	R	T/L	265	42
SR781	140/70-17	66	H	3.75	24.72	5.47	Y	4	R	T/L	300	42
SR781	150/70-17	69	H	4.25	25.28	5.94	Y	4	R	T/L	325	42
SR781	110/90-17	60	H	2.50	24.80	4.29	Y	4	R	T/L	250	41



**E705 Series**

**Trail Master Radial - Bias**

The Shinko E705 has a tread pattern that offers exceptional traction on smooth highways as well as on dry and wet conditions.



**✓ Features include**

- Special tire for both paved and unpaved roads
- Aggressive tread pattern offers outstanding traction on both wet and dry conditions
- Multi-purpose compound ideal for a broad range of climates and terrains
- Rubber compound effectively prevents tire tearing during off-road riding
- Outstanding off-road traction
- DOT approved / 4-ply
- All tires can be used as front and rear tires unless otherwise specified
- Radial Size: 120/70R17, 110/80R19, 120/70R19, 150/70R17, 170/60R17, 150/70R18
- 150/70R18 is JLSB Radial

Model No.	Tire Size	Load Index	Speed Symbol	Rim Size	Diameter	Width	DOT	Ply Rating	Front / Rear	Tube	Maximum Load (kg)	Maximum Air Pressure (PSI)
E705	2.75-21	45	P	1.85	27.13	2.95	Y	4	B	T/T	165	33
E705	4.10-18	59	P	2.50	25.16	4.09	Y	4	B	T/T	243	33
E705	90/90-21	54	H	2.15	27.36	3.54	Y	4	B	T/L	211	41
E705	110/80-19	59	Q	2.50	25.94	4.29	Y	4	F	T/L	243	33
E705	120/80-18	62	H	2.75	25.55	4.69	Y	4	B	T/T	265	41
E705	120/90-17	64	H	2.75	25.51	4.69	Y	4	B	T/T	280	41
E705	130/80-17	65	H	3.00	25.20	5.08	Y	4	B	T/L	290	41
E705	130/90-17	54	H	3.00	26.22	5.08	Y	4	B	T/T	315	41
E705	140/80-17	69	H	3.50	25.83	5.59	Y	4	B	T/L	325	41
E705	150/70-17	69	Q	4.25	25.28	5.94	Y	4	R	T/L	325	36
E705	110/80R19	59	H	2.50	25.94	4.29	Y	R	F	T/L	243	42
E705	150/70R17	69	H	4.25	25.28	5.94	Y	R	R	T/L	325	42
E705	150/70R18 JLSB	70	V	4.25	26.26	5.94	Y	R	R	T/L	335	42
E705	120/70R19	60	H	3.50	25.63	4.80	Y	R	F	T/L	250	42
E705	120/70R17	58	H	3.50	23.62	4.80	Y	R	F	T/L	236	42
E705	170/60R17	72	H	4.50	25.04	6.61	Y	R	R	T/L	355	42



**E-705 II Series**

Aggressive tread pattern derived from our popular Shinko E705 has been optimized to keep all-round rubber compound for a wide spectrum of weather and street/terrain conditions and provide improved versatile tread pattern that provides excellent wet and dry weather adhesion and smooth running on the highway.

Model No.	Tire Size	Load Index	Speed Symbol	Rim Size	Diameter	Width	DOT	Ply Rating	Front / Rear	Tube	Maximum Load (kg)	Maximum Air Pressure (PSI)
E705 II	100/80-14	48	P	2.50	20.55	4.02	Y	4	B	T/L	180	33
E705 II	110/70-13	48	P	3.00	19.21	4.41	Y	4	B	T/L	180	33
E705 II	90/80-14	49	P	2.15	19.92	3.62	Y	6	F	T/L	185	41
E705 II	90/90-17	49	P	2.15	23.50	3.62	Y	4	F	T/L	185	33
E705 II	90/90-18	51	P	2.15	24.40	3.58	Y	4	F	T/L	195	33
E705 II	110/80-14	53	P	2.50	21.06	4.33	Y	4	B	T/L	206	33
E705 II	130/70-13	57	P	3.50	20.35	5.23	Y	4	R	T/L	230	33
E705 II	120/70-14	61	P	3.50	20.70	4.80	Y	6	B	T/L	257	41
E705 II	130/80-17	65	H	3.00	25.24	5.16	Y	4	B	T/L	290	41
E705 II	140/70-14	68	P	3.75	21.88	5.55	Y	6	R	T/L	315	41
E705 II	110/80R19	59	V									
E705 II	160/60R17	69	H									
E705 II	150/70R17	69	V									
E705 II	170/60R17	72	V									
E705 II	140/80-17	69	R									

**SR244 Series**

**Dual Sport 244 Series - 4-Ply / 6-Ply**

The 244 Series is a street and trail tire designed for both paved and unpaved roads.



✓ **Features include**

- Adventure tires
- Street and trail design
- 4-ply or 6-ply
- All sizes designed for both front and rear tires

Model No.	Tire Size	Load Index	Speed Symbol	Rim Size	Diameter	Width	DOT	Ply Rating	Front / Rear	Tube	Maximum Load (kg)	Maximum Air Pressure (PSI)
SR244	2.75-14	35	P	1.85	20.16	2.90	Y	4	B	T/T	121	33
SR244	2.75-19	43	P	1.85	25.16	2.92	Y	4	B	T/T	155	33
SR244	2.75-21	45	P	1.85	27.13	2.95	Y	4	B	T/T	165	32
SR244	3.00-16	45	P	1.85	22.68	3.15	Y	4	B	T/T	165	33
SR244	3.00-17	45	P	1.85	23.70	3.15	Y	4	B	T/T	165	33
SR244	3.00-18	47	L	1.85	24.69	3.15	Y	4	B	T/T	175	32
SR244	3.00-21	51	L	1.85	27.68	3.15	Y	4	B	T/T	195	33
SR244	3.25-18	52	P	2.15	3.50	3.50	Y	4	B	T/T	200	33
SR244	3.50-18	56	P	2.15	25.55	3.66	Y	4	B	T/T	224	33
SR244	4.10-18	60	S	2.15	25.16	4.09	Y	4	B	T/T	250	32
SR244	4.60-17	62	P	2.15	24.76	4.37	Y	4	B	T/T	265	33
SR244	4.60-18	63	P	2.15	25.75	4.37	Y	4	B	T/T	270	33
SR244	5.10-17	67	P	3.00	25.63	5.08	Y	4	B	T/T	307	33
SR244	5.10-18	69	P	3.00	26.61	5.08	Y	4	B	T/T	325	33
SR244	2.50-17	38	L	1.50	22.36	2.52	Y	4	B	T/T	132	33
SR244	3.25-17	50	P	2.15	24.17	3.50	Y	4	B	T/T	190	33
SR244	2.75-21	52	P	1.85	27.13	2.95	Y	6(Reinf.)	B	T/T	200	41
SR244	3.00-17	50	P	1.85	23.70	3.15	Y	6(Reinf.)	B	T/T	190	41
SR244	3.00-18	52	L	1.85	24.69	3.15	Y	6(Reinf.)	B	T/T	200	40
SR244	3.00-21	54	L	1.85	27.68	3.15	Y	6(Reinf.)	B	T/T	230	40
SR244	3.50-18	62	P	2.15	25.55	3.66	Y	6(Reinf.)	B	T/T	265	40
SR244	4.10-18	65	S	2.15	25.16	4.09	Y	6(Reinf.)	B	T/T	290	40
SR244	4.60-17	68	S	2.15	24.76	4.37	Y	6(Reinf.)	B	T/T	315	40
SR244	4.60-18	69	S	2.15	25.75	4.37	Y	6(Reinf.)	B	T/T	325	40

**E700 Series**

**Dual Sport Trail Master**

DOT approved. Aggressive tread design for off-road riding and round design for smooth cornering. 4-ply construction - Available in tubed and tubeless.



✓ **Features include**

- Aggressive, prominent block tread pattern
- Side tread blocks for added cornering stability
- 4-ply carcass for enhanced durability

Model No.	Tire Size	Load Index	Speed Symbol	Rim Size	Diameter	Width	DOT	Ply Rating	Front / Rear	Tube	Maximum Load (kg)	Maximum Air Pressure (PSI)
E700	3.00-21	51	S	1.85	27.68	3.15	Y	4	B	T/L	195	32
E700	4.60-17	62	P	2.15	24.76	4.37	Y	4	B	T/T	261	33
E700	4.60-18	63	S	2.15	25.75	4.37	Y	4	B	T/T	272	36
E700	5.10-17	67	S	3.00	25.63	5.08	Y	4	B	T/L	307	33
E700	130/80-18	66	S	3.00	26.18	5.08	Y	4	B	T/L	300	33



## E804 / E805 Series

### Adventure Trail



The adventure Trail Tires equipped with the latest Dual Sport Tire technology are perfect for 40% on-road and 60% off-road use



804 FRONT



805 REAR

#### ✓ Features include

- 40% on-road and 60% off-road
- E804: Front tire
- E805: Rear tire
- Radial Size: 120/70R19, 110/80R19, 170/60R17, 150/70R17

Model No.	Tire Size	Load Index	Speed Symbol	Rim Size	Diameter	Width	DOT	Ply Rating	Front / Rear	Tube	Maximum Load (kg)	Maximum Air Pressure (PSI)
E-804	110/80B19 M+S	59	Q	2.50	25.95	4.29	Y	4	F	T/L	243	36
E-804	90/90-21	54	T	2.15	27.36	3.54	Y	4	F	T/L	212	41
E-804	100/90-19	57	S	2.50	26.10	3.98	Y	4	F	T/T	230	41
E-804	120/70R19	60	H	3.50	25.63	4.80	Y	R	F	T/L	250	41
E-804	110/80B19 REF	59	Q	2.50	25.95	4.29	Y	4	F	T/L	243	36
E-804	90/90-21 REF	54	T	2.15	27.36	3.54	Y	4	F	T/L	212	41
E-804	110/80R19	59	R	2.50	25.95	4.29	Y	R	F	T/L	243	41
E-805	150/70B17 M+S	69	Q	4.25	25.28	5.94	Y	4	R	T/L	325	36
E-805	130/80-17	65	T	3.00	25.20	5.08	Y	4	B	T/L	290	41
E-805	150/70B18	70	Q	4.25	26.26	5.94	Y	4	R	T/L	335	36
E-805	120/90-18	65	R	2.75	26.50	4.69	Y	4	R	T/T	290	41
E-805	140/80-17	69	Q	3.50	25.83	5.59	Y	4	R	T/T	325	41
E-805	170/60R17	72	H	4.50	25.04	6.61	Y	R	R	T/L	355	41
E-805	130/80-17 REF	65	T	3.00	25.20	5.08	Y	4	R	T/L	290	41
E-805	140/80-17 REF	69	Q	3.50	25.83	5.59	Y	4	R	T/T	325	41
E-805	150/70B17 REF	69	Q	4.25	25.28	5.94	Y	4	R	T/L	325	36
E-805	150/70B18 REF	70	Q	4.25	26.26	5.94	Y	4	R	T/L	335	36
E-805	140/80-18	70	R	3.50	26.73	5.79	Y	4	R	T/T	335	36
E-805	150/70R17	69	R	4.25	25.28	5.95	Y	R	R	T/L	325	41
E-805	150/80B16	77	H	3.50	25.43	5.91	Y	4	R	T/L	412	41



E200 FRONT



E200 REAR



SR428 FRONT



SR428 REAR

## E200 / SR428 Series

Model No.	Tire Size	Load Index	Speed Symbol	Rim Size	Diameter	Width	DOT	Ply Rating	Front / Rear	Tube	Maximum Load (kg)	Maximum Air Pressure (PSI)
E200R	180/80-14	78	P	4.50	25.43	7.17	Y	4	R	T/T	425	33
E200F	130/80-18	66	P	3.00	26.18	5.08	Y	4	F	T/T	300	33
SR428	180/80-14	78	P	4.50	25.35	7.20	Y	4	R	T/T	425	33
SR428	130/80-18	66	P	3.00	26.18	5.08	Y	4	F	T/T	300	33





## 216 Series

The rear 216 tire is the tire of choice for many extreme enduro riders and it has become an essential item for competitions. The front 216 tire's rolling diameter and wider width offer you outstanding performance in rugged terrain.



FRONT



REAR

### ✓ Features include

- The rear tire comes in two versions for tricky terrain and conditions
- MX Version: Multi-purpose enduro compound
- SX Version: Ultra soft compound to offer exceptional grip on the most extreme terrain conditions

Model No.	Tire Size	Load Index	Speed Symbol	Rim Size	Diameter	Width	DOT	Ply Rating	Front / Rear	Tube	Maximum Load (kg)	Maximum Air Pressure (PSI)
216MX	90/90-21 ALL AROUND	54	R	2.15	27.36	3.54	Y	4	F	T/T	230	33
216MX	90/100-21 FAT TYRE	57	R	2.15	28.07	3.54	Y	4	F	T/T	230	33
216MX	80/100-21 ALL AROUND	51	R	1.85	27.28	3.15	Y	4	F	T/T	195	36
216MX	140/80-18	70	R	3.50	26.81	5.59	Y	4	R	T/L	335	33
216SX	140/80-18	70	R	3.50	26.81	5.59	Y	4	R	T/L	335	33
216MX	110/90-19	62	R	2.50	26.81	4.29	Y	4	R	T/T	265	33
216MX	110/100-18	64	R	2.50	26.65	4.29	Y	4	R	T/T	280	33
216MX	120/90-19	66	R	2.75	27.87	5.43	Y	4	R	T/T	300	33
216MX	120/100-18	68	R	2.75	27.44	4.69	Y	4	R	T/T	315	33





**SR267 / SR268 Series**

**Flat Track**

Shinko Flat Track Tires have been designed and tested to offer the best sport riding performance. The SR267/SR268 Series which comes in three compound options will allow you to perform at the highest level on any track.



FRONT



REAR

✓ **Features include**

- Available in soft, medium and hard compound
- Proven performance
- DOT approved

Model No.	Tire Size	Load Index	Speed Symbol	Rim Size	Diameter	Width	DOT	Ply Rating	Front / Rear	Tube	Maximum Load (kg)	Maximum Air Pressure (PSI)
SR267	120/70-17 SOFT	58	M	3.50	23.62	4.80	Y	4	F	T/T	236	33
SR267	130/80-19 SOFT	67	H	3.00	27.20	5.08	Y	4	F	T/T	307	42
SR267	130/80-19 MED	67	H	3.00	27.20	5.08	Y	4	F	T/T	307	42
SR267	130/80-19 HARD	67	H	3.00	27.20	5.08	Y	4	F	T/T	307	42
SR268	140/80-19 SOFT	71	H	3.50	27.83	5.59	Y	4	R	T/T	345	42
SR268	140/80-19 MED	71	H	3.50	27.83	5.59	Y	4	R	T/T	345	42
SR268	140/80-19 HARD	71	H	3.50	27.83	5.59	Y	4	R	T/T	345	42

**R505 Series**

**Hybrid Cheater**

Hard Enduro Extreme Single Track (Trial/Trail)



✓ **Features include**

- New Hybrid Hard Enduro Extreme Single Track Trail Tires offer exceptional traction even in the most extreme conditions - it almost feels like cheating
- Like the Trail Pro Trial Tires, the rugged tread pattern and soft rubber compound on these tires are optimal for various types of dirt trails
- The 505 Cheater Tires do their job as the best off-road tires on soft dirt trails, offering short braking distance
- Gives you the confidence to ride even on the trickiest terrain
- Available in 18" and 19"

Model No.	Tire Size	Load Index	Speed Symbol	Rim Size	Diameter	Width	DOT	Ply Rating	Front / Rear	Tube	Maximum Load (kg)	Maximum Air Pressure (PSI)
R505	100/100-18	59	M	2.50	25.84	3.98	N	4	R	T/T	243	33
R505	110/100-18	64	M	2.50	26.65	4.29	N	4	R	T/T	280	33
R505	100/90-19	57	M	2.50	26.10	3.98	N	4	R	T/T	230	33
R505	110/90-19	62	M	2.50	26.81	4.29	N	4	R	T/T	265	33
R505	120/90-19	66	M	2.75	27.48	4.69	N	4	R	T/T	299	33
R505	130/70-12 MOBBER	56	P	3.50	19.17	5.08	Y	4	R	T/L	224	33



## 546 Series

Medium terrain / Great choice for off-road riding



FRONT



REAR

### ✓ Features include

- **Front Tire Features**
  - Sawtooth tread pattern with grooves placed at a 45 degree angle for outstanding cornering and brake stability
  - Offers outstanding traction on soft to medium loam
- **Rear Tire Features**
  - Can be used on dirt, muddy, sandy and medium loam trails
  - Rubber compound for increased block life and durability

Model No.	Tire Size	Load Index	Speed Symbol	Rim Size	Diameter	Width	DOT	Ply Rating	Front / Rear	Tube	Maximum Load (kg)	Maximum Air Pressure (PSI)
F546	80/100-21	51	M	1.85	27.28	3.15	Y	4	F	T/T	195	33
F546	90/100-21	57	M	2.15	28.07	3.54	Y	4	F	T/T	230	33
F546	70/100-17	40	M	1.60	22.52	2.72	Y	4	F	T/T	140	33
F546	70/100-19	42	M	1.60	24.53	2.72	Y	4	F	T/T	150	33
R546	110/90-19	62	M	2.50	26.81	4.29	Y	4	R	T/T	265	33
R546	110/100-18	64	M	2.50	26.65	4.29	Y	4	R	T/T	280	33
R546	100/100-18	59	M	2.50	25.87	3.98	Y	4	R	T/T	243	33
R546	120/80-19	63	M	2.75	26.57	4.69	Y	4	R	T/T	270	33
R546	100/90-19	57	M	2.50	26.10	3.98	Y	4	R	T/T	230	33
R546	90/100-16	51	M	2.15	23.07	2.54	Y	4	R	T/T	195	33
R546	90/100-14	49	M	2.15	21.10	3.54	Y	4	R	T/T	185	33

## F524 / R525 Series

Medium terrain / Ideal for soft to medium terrain.



F524



R525

### ✓ Features include

- Ideal for very soft terrain (mud/sand)
- Large tread blocks effectively remove mud
- Prominent, aggressive tread pattern

Model No.	Tire Size	Load Index	Speed Symbol	Rim Size	Diameter	Width	DOT	Ply Rating	Front / Rear	Tube	Maximum Load (kg)	Maximum Air Pressure (PSI)
F524	80/100-21	51	M	1.85	27.28	3.15	Y	4	F	T/T	195	33
F524	70/100-19	42	M	1.60	24.53	2.72	Y	4	F	T/T	150	33
R525	100/100-18	59	M	2.50	25.84	3.98	N	4	R	T/T	243	33
R525	110/100-18	64	M	2.50	26.65	4.29	N	4	R	T/T	279	33
R525	100/90-19	57	M	2.50	26.10	3.98	N	4	R	T/T	229	33
R525	110/90-19	62	M	2.50	26.81	4.29	Y	4	R	T/T	264	33
R525	90/100-16	51	M	2.15	23.07	3.54	Y	4	R	T/T	195	33
R525	90/100-14	49	M	2.15	21.10	3.54	Y	4	R	T/T	185	33
R525	120/100-18	68	M	2.75	27.44	4.69	Y	4	R	T/T	315	33
R525	120/90-19	66	M	2.75	27.48	4.69	Y	4	R	T/T	300	33
R525	80/100-14	49	M	1.85	20.31	3.15	Y	6(Reinf.)	R	T/T	185	41
F525	60/100-14	29	M	1.40	18.74	2.36	Y	4	F	T/T	103	33
525 CHEATER	110/100-18	64	M	2.50	26.65	4.29	N	4	R	T/T	279	33
525 CHEATER	110/90-19	62	M	2.50	26.81	4.29	N	4	R	T/T	264	33
525 CHEATER	120/90-19	66	M	2.75	27.48	4.69	N	4	R	T/T	300	33
525 CHEATER	120/100-18	68	M	2.75	27.44	4.69	N	4	R	T/T	315	33
525 CHEATER	90/100-16	51	M	2.15	23.07	3.54	Y	4	R	T/T	195	33



**SR241 Series**

**Hybrid Cheater**

These versatile tires featuring a combination of a rough nylon carcass and dimple tread blocks, can be used for various types of terrain. The tightly placed tread blocks leave the terrain undamaged during trail riding.



✓ **Features include**

- Durable nylon carcass
- Dimple tread blocks
- Tires for various types of terrain

Model No.	Tire Size	Load Index	Speed Symbol	Rim Size	Diameter	Width	DOT	Ply Rating	Front / Rear	Tube	Maximum Load (kg)	Maximum Air Pressure (PSI)
SR241	2.50-15	34	L	1.60	20.35	2.52	Y	4	B	T/T	118	33
SR241	2.50-17	38	L	1.50	22.36	2.52	Y	4	B	T/T	132	33
SR241	2.75-14	35	P	1.85	20.16	2.95	Y	4	B	T/T	121	33
SR241	2.75-18	42	P	1.85	24.13	2.92	Y	4	B	T/T	150	33
SR241	23/4-17(2.75-17)	47	J	1.85	22.99	2.95	Y	4	B	T/T	166	41
SR241	2.75-19	43	P	1.85	25.16	2.95	Y	4	B	T/T	155	33
SR241	2.75-21	45	P	1.85	27.13	2.95	Y	4	B	T/T	165	33
SR241	3.00-12	47	J	2.50	18.27	3.31	Y	4	B	T/T	175	36
SR241	3.00-16	43	P	1.85	22.68	3.15	Y	4	B	T/T	155	33
SR241	3.00-17	45	P	1.85	23.70	3.15	Y	4	B	T/T	165	33
SR241	3.00-18	47	P	1.85	24.69	3.15	Y	4	B	T/T	175	32
SR241	3.00-21	51	P	1.85	27.68	3.15	Y	4	B	T/T	195	33
SR241	3.50-18	56	P	2.15	25.55	3.66	Y	4	B	T/T	224	32
SR241	3.50-19	57	P	2.15	26.57	3.66	Y	4	B	T/T	230	33
SR241	4.00-18	64	P	2.50	26.42	4.25	Y	4	B	T/T	280	33

**540 Series**

The 540 Series is optimal for very soft terrain like muddy and sandy surfaces. The large tread blocks effectively remove mud and the prominent, aggressive tread pattern offers outstanding traction even in rough terrain conditions.



F540



R540

Model No.	Tire Size	Load Index	Speed Symbol	Rim Size	Diameter	Width	DOT	Ply Rating	Front / Rear	Tube	Maximum Load (kg)	Maximum Air Pressure (PSI)
F540	70/100-17	40	M	1.60	22.52	2.72	N	4	F	T/T	140	33
F540	80/100-21	51	M	1.85	27.28	3.15	Y	4	F	T/T	195	33
F540	70/100-19	42	M	1.60	24.53	2.72	Y	4	F	T/T	150	33
R540	90/100-14	49	M	2.15	21.10	3.54	Y	4	R	T/T	185	33
R540	100/100-18	59	M	2.50	25.87	3.98	N	4	R	T/T	243	33
R540	110/100-18	64	M	2.50	26.65	4.29	N	4	R	T/T	279	33
R540	120/100-18	68	M	2.75	27.44	4.69	Y	4	R	T/T	314	33
R540	100/90-19	57	M	2.50	26.10	3.98	Y	4	R	T/T	229	33
R540	110/90-19	62	M	2.50	26.81	4.29	N	4	R	T/T	264	33
R540	120/90-19	66	M	2.75	27.48	4.69	N	4	R	T/T	299	33
R540	90/100-16	51	M	2.15	23.07	3.54	N	4	R	T/T	195	33

## SR421 Series

Mini Bike Trail



### ✓ Features include

- 4-ply nylon carcass
- DOT approved

Model No.	Tire Size	Load Index	Speed Symbol	Rim Size	Diameter	Width	DOT	Ply Rating	Front / Rear	Tube	Maximum Load (kg)	Maximum Air Pressure (PSI)
SR421	3.00-10	42	J	2.50	16.26	3.31	Y	4	B	T/T	150	36
SR421	3.50-10	51	J	2.50	17.20	3.62	Y	4	B	T/T	195	36
SR421	3.50-8	46	J	2.50	15.20	3.62	Y	4	B	T/T	170	36
SR421	4.00-8	55	J	2.50	16.34	4.13	Y	4	B	T/T	218	36

## 520/520A Series

Featuring a directional tread pattern, these tires can be used for medium to hard terrain.



### ✓ Features include

- Highly resistant to tread block tearing and chipping
- Directional tread pattern
- Compound with high carbon ratio

Model No.	Tire Size	Load Index	Speed Symbol	Rim Size	Diameter	Width	DOT	Ply Rating	Front / Rear	Tube	Maximum Load (kg)	Maximum Air Pressure (PSI)
SR520	2.50-10	33	J	1.50	15.31	2.56	Y	4	F	T/T	115	36
SR520	2.75-10	38	J	1.85	15.71	2.83	Y	4	R	T/T	132	36
SR520	2.50-12	33	J	1.50	17.32	2.56	Y	4	B	T/T	115	36
F520A	80/100-21	51	M	1.85	27.28	3.15	Y	4	F	T/T	195	33
F520A	70/100-17	40	M	1.60	22.52	2.72	Y	4	F	T/T	140	33
F520A	70/100-19	42	M	1.60	24.53	2.72	Y	4	F	T/T	150	33
R520A	90/100-14	49	M	2.15	21.10	3.54	N	4	R	T/T	185	33
R520A	110/90-19	62	M	2.50	26.81	4.29	Y	4	R	T/T	265	33
R520A	110/100-18	64	M	2.50	26.73	4.29	N	4	R	T/T	280	33
R520A	120/100-18	68	M	2.75	27.44	4.69	Y	4	R	T/T	315	33
R520A	100/90-19	57	M	2.50	26.10	3.98	Y	4	R	T/T	230	33

## F504 / R505 Series

Hard terrain / Effective on various types of terrain (soft to hard).

The F504/R505 set offers outstanding traction, braking performance, stability and steering.



F504



R505

### ✓ Features include

- Economical price
- Compound with high carbon ratio
- Outstanding traction, braking performance and stability

Model No.	Tire Size	Load Index	Speed Symbol	Rim Size	Diameter	Width	DOT	Ply Rating	Front / Rear	Tube	Maximum Load (kg)	Maximum Air Pressure (PSI)
F504	80/100-21	51	M	1.85	27.28	3.15	N	4	F	T/T	195	33
F504	120/70-12 MOBBER	51	P	3.50	18.62	4.80	Y	4	F	T/L	195	33
R505	100/100-18	59	M	2.50	25.84	3.98	N	4	R	T/T	243	33
R505	110/100-18	64	M	2.50	26.65	4.29	N	4	R	T/T	280	33
R505	100/90-19	57	M	2.50	26.10	3.98	N	4	R	T/T	230	33
R505	110/90-19	62	M	2.50	26.81	4.29	N	4	R	T/T	265	33
R505	120/90-19	66	M	2.75	27.48	4.69	N	4	R	T/T	299	33
R505	130/70-12 MOBBER	56	P	3.50	19.17	5.08	Y	4	R	T/L	224	33

Cruiser

**SR007**



Model No.	Tire Size	Load Index	Speed Symbol
SR007	110/90-12	64	P
SR007	140/70-12	60	P
SR007	130/70-11	60	L
SR007	110/70-12	47	P

**SR009**



Model No.	Tire Size	Load Index	Speed Symbol
SR009	110/70-12	47	J
SR009	120/70-12	51	J
SR009	3.50-10	51	J

**SR016**



Model No.	Tire Size	Load Index	Speed Symbol
SR016	70/90-17	38	P
SR016	80/90-17	44	P
SR016	90/80-17	46	P
SR016	70/90-14	34	P
SR016	80/90-14	40	P
SR016	90/80-14	45	P
SR016	120/70-17	58	P
SR016	110/70-17	54	S
SR016	130/70-17	62	H
SR016	100/80-14	48	P
SR016	110/80-14	59	S
SR016	140/70-14	68	P
SR016	140/70-17	66	S
SR016	120/70-14	55	P
SR016	150/60-17	66	H
SR016	80/80-14	43	P
SR016	120/70-15	56	S

Sport

**SR201**



Model No.	Tire Size	Load Index	Speed Symbol
SR201	3.25-19	54	P

**SR242**



Model No.	Tire Size	Load Index	Speed Symbol
SR242	4.00-18	64	P

Dual Sport

Off-Road



Street · Scooter

4-Wheeler · Racing  
Garden · Golf Cart



**SR400**



Model No.	Tire Size	Load Index	Speed Symbol
SR400	2.50-10	33	J

**SR402**



Model No.	Tire Size	Load Index	Speed Symbol
SR402	3.50-8	46	J
SR402	3.50-10	51	J

**SR412**



Model No.	Tire Size	Load Index	Speed Symbol
SR412	3.00-10	42	J

**SR425**



Model No.	Tire Size	Load Index	Speed Symbol
SR425	3.00-10	42	J
SR425	3.50-10	51	J
SR425	90/90-10	50	J
SR425	100/80-10	53	J
SR425	100/90-10	56	J
SR425	110/80-10	58	J
SR425	120/90-10	66	J
SR425	130/90-10	70	J
SR425	130/60-13	53	J
SR425	130/70-10	52	L

**SR426**



Model No.	Tire Size	Load Index	Speed Symbol
SR426	3.00-10	42	J
SR426	120/90-10	66	J
SR426	130/90-10	70	J
SR426	120/70-12	51	P
SR426	130/70-12	62	P

**SR428**



Model No.	Tire Size	Load Index	Speed Symbol
SR428	120/70-12	51	J
SR428	130/70-12	56	J

**SR429**



Model No.	Tire Size	Load Index	Speed Symbol
SR429	120/70-13	53	L
SR429	130/60-13	53	L

**SR501**



Model No.	Tire Size	Load Index	Speed Symbol
SR501	4.00-8	-	-

**SR502**



Model No.	Tire Size	Load Index	Speed Symbol
SR502	4.00-8	-	-

**SR510**



Model No.	Tire Size	Load Index	Speed Symbol
SR510	5.4-6 (130/90-6)	-	-

**SR561**



Model No.	Tire Size	Load Index	Speed Symbol
SR561	100/90-10	56	J

**SR562**



Model No.	Tire Size	Load Index	Speed Symbol
SR562	100/90-10	56	J
SR562	90/90-12	44	J
SR562	110/90-10	51	J

Cruiser

Sport

Dual Sport

Off-Road

Street · Scooter

4-Wheeler · Racing  
Garden · Golf Cart



Model No.	Tire Size	Load Index	Speed Symbol
SR563	90/90-14	46	P
SR563	100/90-14	51	P



Model No.	Tire Size	Load Index	Speed Symbol
SR566	90/90-10	50	J



Model No.	Tire Size	Load Index	Speed Symbol
SR567	120/70-14	55	S
SR567	110/70-16	52	S
SR567	110/80-16	55	S
SR567	120/80-14	58	S
SR567	120/70-15	56	S
SR567	120/70-16	57	S
SR567	80/90-14	43	P
SR567	100/80-16	50	P
SR567	110/90-13	56	P
SR567	120/70-13	53	P
SR567	110/90-12	64	P
SR567	110/70-11	45	L
SR567	120/70-11	50	P



Model No.	Tire Size	Load Index	Speed Symbol
SR568	140/60-14	64	S
SR568	150/70-14	66	S
SR568	100/80-16	50	P
SR568	120/80-16	60	P
SR568	130/80-16	64	P
SR568	140/70-16	65	S
SR568	160/60-14	65	H
SR568	160/60-15	67	H
SR568	90/90-14	46	P
SR568	140/70-14	68	S
SR568	130/80-15	63	P
SR568	140/70-15	69	P
SR568	130/70-16	61	S
SR568	140/60-13	63	P
SR568	130/70-13	63	P
SR568	130/60-13	60	P
SR568	150/70-13	64	S
SR568	130/70-12	62	P
SR568	120/70-10	54	L
SR568	130/70-11	60	P
SR568	140/70-12	65	P



Model No.	Tire Size	Load Index	Speed Symbol
SR604	3.00-18	47	P



Model No.	Tire Size	Load Index	Speed Symbol
SR607	2.75-18	42	P



Model No.	Tire Size	Load Index	Speed Symbol
SR609	90/90-17	49	P
SR609	90/90-18	51	P



Model No.	Tire Size	Load Index	Speed Symbol
SR612	90/90-18	51	P

## SR613



Model No.	Tire Size	Load Index	Speed Symbol
SR613	2.75-17	41	P
SR613	2.75-18	42	P
SR613	80/100-17	46	S

SR615F /  
SR615R

Model No.	Tire Size	Load Index	Speed Symbol
SR615F	110/70-13	48	P
SR615F	120/70-12	51	P
SR615F	110/90-13	56	P
SR615R	130/70-13	57	P
SR615R	130/70-12	62	P
SR615R	140/60-13	63	P

SR616F /  
SR616R

Model No.	Tire Size	Load Index	Speed Symbol
SR616F	100/80-14	48	P
SR616F	110/70-14	50	P
SR616R	120/70-14	61	P
SR616R	130/70-13	63	P

## SR704



Model No.	Tire Size	Load Index	Speed Symbol
SR704	2.25-17	33	L

## SR713



Model No.	Tire Size	Load Index	Speed Symbol
SR713	3.60-18	51	H
SR713	80/90-18	45	P

## SR714



Model No.	Tire Size	Load Index	Speed Symbol
SR714	80/80-16	45	P
SR714	90/80-16	51	P
SR714	2.25-16	31	L
SR714	110/80-14	59	S

## SR716



Model No.	Tire Size	Load Index	Speed Symbol
SR716	100/90-17	55	P

## SR722



Model No.	Tire Size	Load Index	Speed Symbol
R722	110/90-18(T/T)	61	T
SR722	4.10-18	59	P
SR722	2.75-19	43	P

## SR723



Model No.	Tire Size	Load Index	Speed Symbol
SR723	2.75-16	40	P
SR723	120/70-12	58	P
SR723	130/70-12	62	P
SR723	110/70-11	45	P
SR723	120/70-10	54	P





Cruiser

**SR724**



Model No.	Tire Size	Load Index	Speed Symbol
SR724	3.00-16	48	P

**SR742**



Model No.	Tire Size	Load Index	Speed Symbol
SR742	2.75-17	41	P
SR742	3.00-16	48	P

**SR745**



Model No.	Tire Size	Load Index	Speed Symbol
SR745	2.75-17	47	P

Sport

**SR877**



Model No.	Tire Size	Load Index	Speed Symbol
SR877	80/90-14	40	P
SR877	90/80-14	49	P
SR877	100/80-17	52	S
SR877	3.00-17	50	P

**SR879**



Model No.	Tire Size	Load Index	Speed Symbol
SR879	90/90-12	54	J
SR879	100/80-12	56	J

**SR898**



Model No.	Tire Size	Load Index	Speed Symbol
SR898	70/90-17	38	P
SR898	80/80-17	41	P
SR898	80/90-17	44	P
SR898	90/80-17	46	P
SR898	100/80-17	52	S

Dual Sport

Off-Road

**Scooter White Wall**

**SR550**  
White Wall



Model No.	Tire Size	Load Index	Speed Symbol
SR550	3.00-10 W/W	50	J
SR550	3.50-10 W/W	59	J
SR550	3.50-8 W/W	46	J
SR550	4.00-8 W/W	55	J
SR550	3.50-10 W/W	59	J

**SR723**  
White Wall



Model No.	Tire Size	Load Index	Speed Symbol
SR723	120/70-12 W/W	58	P
SR723	130/70-12 W/W	62	P
SR723	110/70-11 W/W	45	P
SR723	120/70-10 W/W	54	P
SR723	110/70-12 W/W	47	P
SR723	140/70-12 W/W	65	P

Street - Scooter

4-Wheeler - Racing  
Garden - Golf Cart

Garden Tire



SR852

13X6.50-6  
16X6.50-8  
15X6.00-6



SR855 (SR851)

13X5.00-6  
15X6.00-6  
16X6.50-8



SR860

18X8.50-8

Golf Cart Tire



SR855

18X8.50-8



SR860

190/50-12

4-Wheeler Tire



SR900

25X8-12



SR901

25X10-12  
18X7.00-7



SR902

19X7.00-8  
18X9.50-8



SR910

22X10-10  
22X7-10



SR951

20x7-8



SR952

22X10-8



SR953

145/70-6



SR954

22X11-8



SR955

20X7-8  
21X7-10



SR956

22X10-8  
22X10-10

Racing Cart Tires



F508

3.6X10.0-5  
4.5X10.0-5



F600A

4.5X10.0-5



R508

6.0X11.0-5  
7.1X11.0-5



R600A

6.0X11.0-5

Technical Information

Tire construction

"Diagonal" or "Bias Ply" tires have ply cords extended to the beads. The ply cords are placed at an angle below 90 degrees from the center of the tread to construct a crisscross pattern. On these tires, "—" or "D" is marked in front of the number that indicates the diameter of the rim.

"Bias-Belted" tires have a "Diagonal (bias ply)" construction but they also have more than two non-elastic belts placed in a crisscross pattern on top of the ply cords. The letter "B" is marked in front of the number that indicates the diameter of the rim.

"Radial" tires have ply cords that are extended to the beads. The ply cords are placed at an angle below 90 degrees from the center of the tread to construct a crisscross pattern. The carcass is stabilized with non-elastic cylindrical belts. The letter "R" marked in front of the number that indicates the diameter of the rim. ex) 120/70R17 58W

Speed Symbol

The speed symbol indicates the maximum speed at which the tire can carry the load corresponding with its load index under service conditions specified by the tire manufacturer. These speeds are shown in Table 1 and apply to tires when in good condition, inflated to the correct pressure, operating within their specific load capacity and fitted to the correct size rim. Speeds quoted are the maximum speed of which the tire is capable, not the speed at which it is normally ridden. All maximum speeds referred to are subject to applicable legal speeds.

[Table ①] Speed Symbol

Speed Symbol	B	F	G	J	K	L	M	N	P	Q	R	S	T	U	H	V	W
Maximum Speed (Km/h)	50	80	90	100	110	120	130	140	150	160	170	180	190	200	210	240	270

Load Index

The load index is a numerical code associated with the maximum load a tire can carry (except for loads at speeds above 210 km/h) at the speed indicated by its speed symbol under service conditions specified by the tire manufacturer. You should only fit replacement tires bearing the precise speed and load index referred to in the motorcycle manufacturer's handbook. Before you make any variation please consult the tire manufacturer to ensure that the replacement tire is a correct fitment for your motorcycle.

[Table ②] Load Index - kg

LI	Kg	LI	Kg	LI	Kg	LI	Kg	LI	Kg	LI	Kg	LI	Kg	LI	Kg	LI	Kg
41	145	48	180	55	218	62	265	69	325	76	400	83	487	90	600	97	730
42	150	49	185	56	224	63	272	70	335	77	412	84	500	91	615	98	750
43	155	50	190	57	230	64	280	71	345	78	425	85	515	92	630	99	775
44	160	51	195	58	236	65	290	72	355	79	437	86	530	93	650	100	800
45	165	52	200	59	243	66	300	73	365	80	450	87	545	94	670	101	825
46	170	53	206	60	250	67	307	74	375	81	462	88	560	95	690	102	850
47	175	54	212	61	257	68	315	75	387	82	475	89	580	96	710	103	875

Cruiser

Sport

Dual Sport

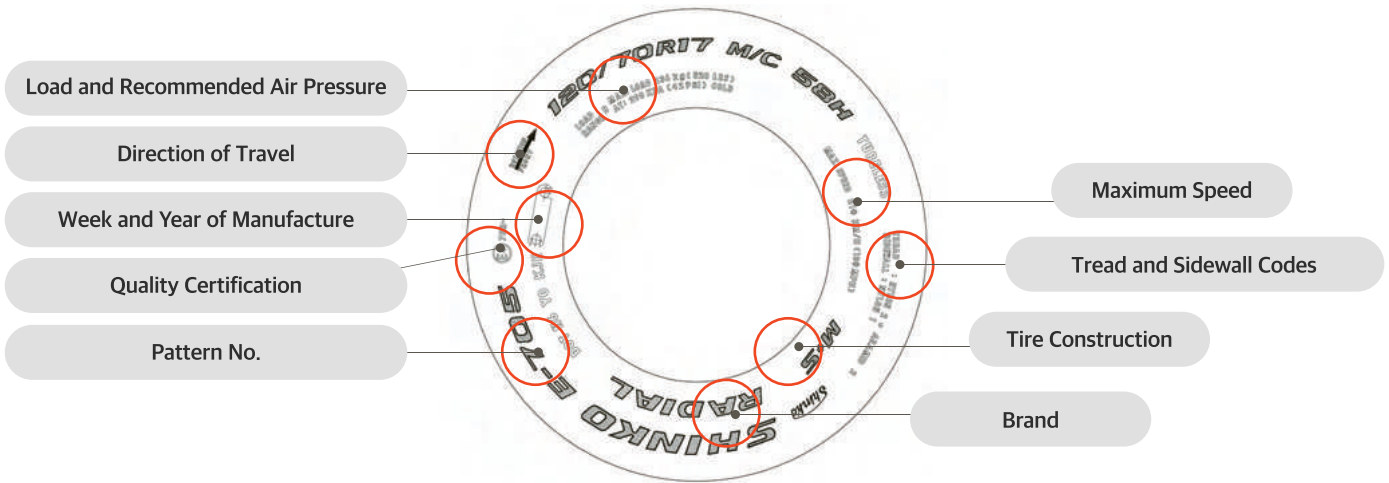
Off-Road

Street · Scooter

4-Wheeler · Racing Garden · Golf Cart



Basic Tire Information



Indicators

120/70R17    M/C    58H

①      ②    ③    ④                      ⑤                      ⑥    ⑦

- ① Tread Width (mm)
- ② Aspect Ratio (Series)
- ③ Tire Construction
- ④ Rim Diameter (inches)
- ⑤ Motorcycle Tire
- ⑥ Load Rating
- ⑦ Speed Symbol
- "R" : Radial Tire
- "—" or "D" : Bias Tire
- "B" : Bias-Belted Tire

Speed Symbol	Maximum Speed (Km/h)
B	50
J	100
K	110
L	120
P	150
Q	160
S	180
H	210
V	240
W	270

Notations

5.00 - 16 M/C 69S 22 X 10 - 8

①      ②    ③    ④                      ⑤    ⑥                      ⑦    ⑧    ⑨

- ① Tread Width (mm)
- ② Aspect Ratio (Series)
- ③ Rim Diameter (inches)
- ④ Motorcycle Tire
- ⑤ Load Rating
- ⑥ Speed Symbol
- ⑦ Tire Diameter (inches)
- ⑧ Tread Width (inches)
- ⑨ Rim Diameter (inches)
- "R" : Radial Tire
- "—" or "D" : Bias Tire
- "B" : Bias-Belted Tire

**WARNING**

- Please put the pressure specified by the manufacturer of tire or vehicle, check the pressure regularly.
- In case of non-compliance with proper pressure, it may be the cause of abnormal wear and accidents.
- Please drive according to the running direction of the specified tires.
- It is recommended to check the tire condition regularly as once a month.
- When the tire TWI (Tread Wear Indicator) mark appeared, immediately should be replaced with a new tire.
- When mounting or detaching tires and rims, only skilled and trained expert must be working.



# **SHINKO**

**MOTORCYCLE TIRES**

## **Shin Hung Co., Ltd.**

150, Daesin-ro, Jinju-si, Gyeongsangnam-do, Korea  
Tel +82-55-752-6511 | Fax +82-055-752-6535  
E-mail [export@shinkotire.co.kr](mailto:export@shinkotire.co.kr) | <http://www.shinkotire.co.kr>

## **GROUP COMPANY Shinko Co., Ltd.**

147, 3-Chome, Takochi-Higashi, Yao City, Osaka 581-0053, Japan  
Tel +81-6-6709-6661 | Fax +81-6-6709-6652

## **Kyushu Shinko Co., Ltd.**

1945-1, Oaza, Takajo-cho, Kitamorogata, Miyazaki 885-1203, Japan  
Tel +81-986-58-2560 | Fax +81-986-58-3736

## **Jinzhou Xinxing Rubber Production Co., Ltd.**

China Liaoning Jinzhou Economic Development Experiment Zone  
Investment Bureau, 121221, China  
Tel +86-416-790-0661 | Fax +86-416-790-0667  
E-mail [shinkotire@126.com](mailto:shinkotire@126.com)