

OFF ROAD BOOTS 2022/2023



Malcolm Stewart



Romain Febvre





CHOICES CREATE CHAMPIONS, BUT SUPPORT IS WHAT KEEPS THEM AT THE TOP, WHICH IS WHY THE SG-12 BOOT IS THE CHOICE FOR RIDERS WHO ASPIRE TO RISE ABOVE THE COMPETITION. FROM BOX TO BIKE WITH MINIMAL BREAK-IN, GAERNE'S SG-12 BOOTS ARE MADE IN ITALY BY PRACTICED HANDS THAT STEP-BY-STEP LAYER SUPPORT, SECURITY, AND COMFORT INTO EACH BOOT. THE PREMIUM SG-12 OFFERS A STREAMLINED TOE BOX FOR PRECISION CONTROL, A DUAL-STAGE PIVOT SYSTEM FOR MORE AGGRESSIVE RIDERS, AN ANTI-SHOCK COMPOSITE SOLE FOR BETTER CONNECTION TO THE PEGS, SLIMLINE INNER GRIP GUARD PANELS FOR BETTER CONTROL AND GRIP OF THE BIKE, MEMORY FOAM INTERIOR FOR A CUSTOMIZED FIT, AND AN ADJUSTABLE SHIN PLATE FOR MORE ROOM AROUND THE CALVES. OUR BUCKLE SYSTEM MAKES IT EASY TO GET IN AND GET GOING, SO A RIDER CAN FOCUS LESS ON GEAR AND MORE ON THE RIDE.

SG12

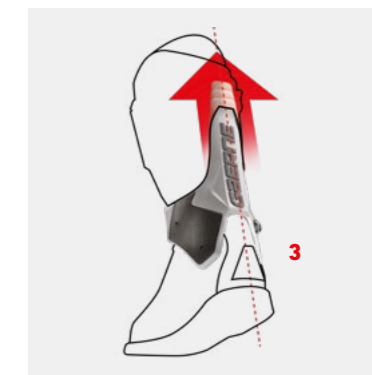
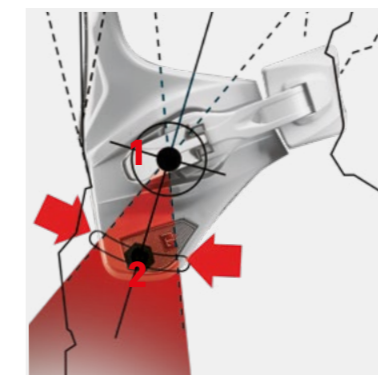
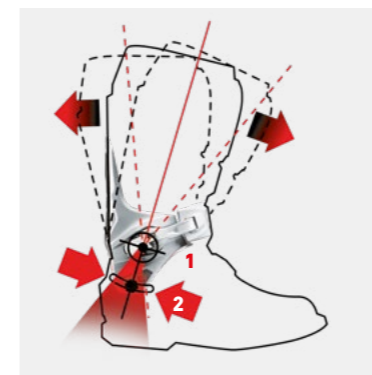
Quality comfort pride!

DUAL STAGE PIVOT SYSTEM.

1 This revolutionary system is patented and exclusive to Gaerne. The first pivot is attached to the "Razorback"

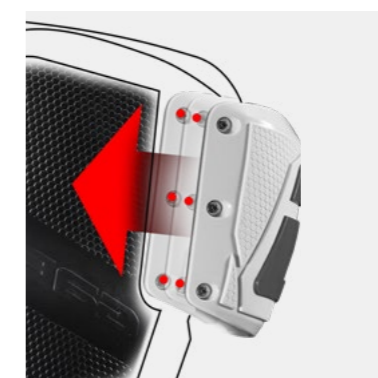
natural while on the peg in a shifting or breaking situation - However, it will "bottom out" and absorb shock in the case of over-jumping a jump or in the case of unwanted compression.

3 This provides a rigid component that offers a strong lateral support while a glide-plate keeps the upper in a firm and upright position



FRONT PLATE/SHIN GUARD.

The Thermoplastic shin plate is anatomically shaped for a perfect fit. By removing three screws you can also make the opening wider to accommodate a bigger leg or knee-brace.



DUAL COMPOSITE SOLE.

Anti-shock rubber that has made Gaerne soles famous around the world



MADE IN ITALY

SG12



2174 **SG12 BLACK/YELLOW FLUO**
089 EU 41 42 43 44 45 46 47 48 | **US** 7 8 9 10 11 12 13



2174 **SG12 ORANGE/GREY/WHITE**
083 EU 41 42 43 44 45 46 47 48 | **US** 7 8 9 10 11 12 13



2174 **SG12 SOLID BLUE**
088 EU 41 42 43 44 45 46 47 48 | **US** 7 8 9 10 11 12 13



2174 **SG12 WHITE**
074 EU 41 42 43 44 45 46 47 48 49 | **US** 7 8 9 10 11 12 13 14



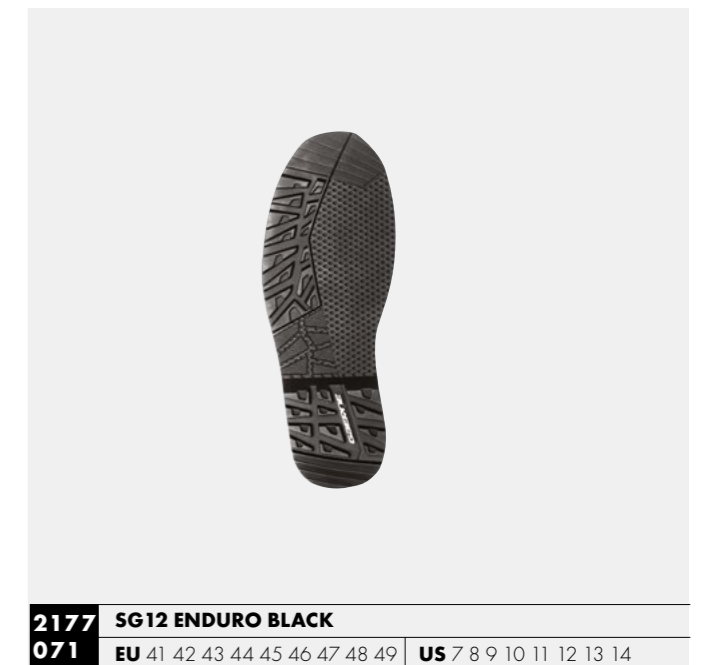
2174 **SG12 BLACK/WHITE**
014 EU 41 42 43 44 45 46 47 48 | **US** 7 8 9 10 11 12 13



2174 **SG12 SOLID RED**
085 EU 41 42 43 44 45 46 47 48 | **US** 7 8 9 10 11 12 13



2174 **SG12 BLACK**
071 EU 41 42 43 44 45 46 47 48 49 | **US** 7 8 9 10 11 12 13 14



2177 **SG12 ENDURO BLACK**
071 EU 41 42 43 44 45 46 47 48 49 | **US** 7 8 9 10 11 12 13 14



Photo Credits Gas Gas Media Library / Future7media

Andrea Verona

2022 ENDUROGP WORLD CHAMPION



A RESTYLED RIDER FAVORITE, THE CLASSIC SG-10 WAS THOUGHTFULLY REDESIGNED TO REMAIN SUPPORTIVE AND SIMPLE, YET FUNCTIONAL IN ALL THE WAYS RIDERS NEED, TO FEEL COMFORTABLE AND CONFIDENT. WITH ONE OF THE ROOMIEST TOE BOXES AROUND AND A PLUSH FIT, THE SG-10 REMAINS COMFORTABLE YET SUPPORTIVE, WITH ITS WRAP AROUND PIVOT SYSTEM FOR STABILITY, SLIMLINE RUBBER INNER GRIP GUARD PANELS FOR ADDED BIKE CONTROL, GAERNE'S SPECIALIZED DUAL COMPOSITE SOLE FOR A CLOSE CONNECTION WITH THE PEGS, AND AN ADJUSTABLE ALLOY BUCKLE SYSTEM THAT ALLOWS THE BOOT UPPER TO EXPAND WHEN MORE SPACE IS NEEDED IN THE CALF AREA. INSIDE AND OUT, THE SG-10 IS CREATED IN ITALY WITH THE COMFORT, QUALITY, AND PRIDE THAT HAVE ALWAYS BEEN AT THE HEART OF GAERNE.

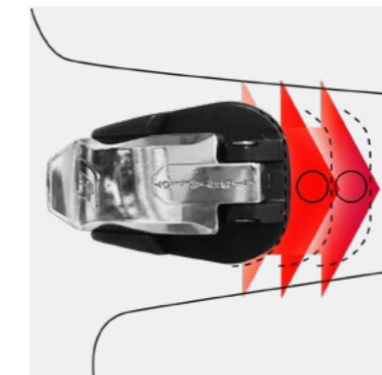
SG10

Classic support confident ride



RAZOR BACK PIVOT SYSTEM

Grants a strong lateral support, without compromising the flexibility. Instep area with soft microfiber for superior comfort.



CLOSURE SYSTEM

Closure system consist of 4 light alloy replaceable buckles for an easy, fast and precise closure. The first two buckles on top can be unscrewed and moved in order to accommodate a bigger leg or knee brace.



DUAL COMPOSITE RUBBER SOLE

with traditional goodyear construction offering durability and superior grip on the bike.



2190 **SG10 BLACK**
001 EU 39 40 41 42 43 44 45 46 47 48 49 US 6 7 8 9 10 11 12 13 14



Photo credits Davide Messora

Thomas Chareyre
 SUPERMOTO
 WORLD CHAMPION

MADE IN ITALY

SG10



2190 **SG10 BLACK/WHITE**
014 EU 39 40 41 42 43 44 45 46 47 48 US 6 7 8 9 10 11 12 13

MADE IN ITALY

SUPERMOTARD



4673 001
 VSM SUPERMOTARD ORANGE SOLE



4674 001
 VSM KIT RUBBER SLIDER



4674 002
 VSM KIT PLASTIC SLIDER



2191 **SG10 SUPERMOTARD BLACK**
001 EU 39 40 41 42 43 44 45 46 47 48 49 US 6 7 8 9 10 11 12 13 14

THIS INNOVATIVE BOOT HAS A SLEEK NEW LOOK. PARTIALLY DUE TO THE EXCLUSIVE GAERNE "WRAP AROUND" ANKLE PIVOT SYSTEM. THIS NEW LIGHTWEIGHT FEATURE ALLOWS THE RIDER MORE ANKLE SUPPORT WHILE AT THE SAME TIME GIVES YOU A COMFORTABLE FIT. ALLOY BUCKLES, HEAVY DUTY BURN GUARD, TOE BUMPER AND THE TRADEMARK GAERNE SOLE COMPLETE THE TASK, SEE THE FASTBACK ENDURANCE AT A DEALER NEAR YOU!



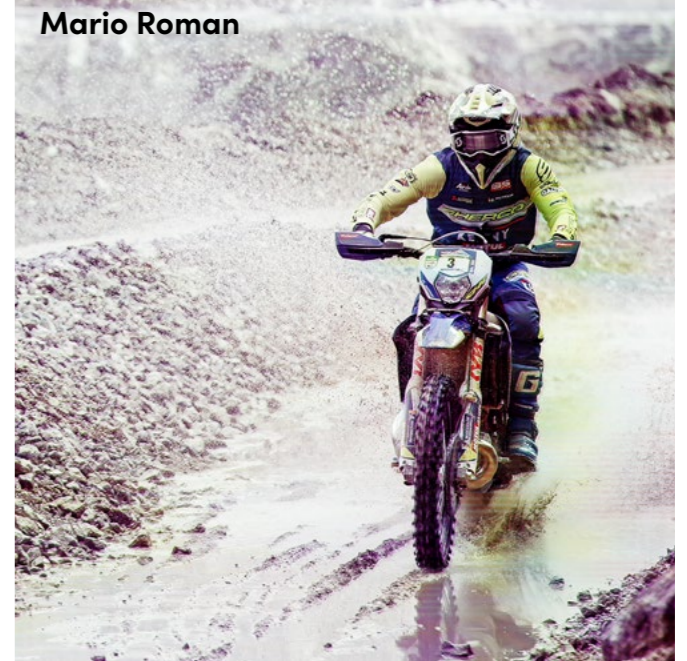
Closure system consist of 4 light alloy replaceable buckles for an easy, fast and precise closure. The first two buckles on top can be unscrewed and moved in order to accommodate a bigger leg or knee brace.



2196 004 **FASTBACK ENDURANCE WHITE**
 EU 39 40 41 42 43 44 45 46 47 48 49 | **US** 6 7 8 9 10 11 12 13 14



2196 001 **FASTBACK ENDURANCE BLACK**
 EU 39 40 41 42 43 44 45 46 47 48 49 | **US** 6 7 8 9 10 11 12 13 14



Mario Roman

MADE IN ITALY

FASTBACK ENDURANCE



2196 009 **FASTBACK ENDURANCE YELLOW**
 EU 39 40 41 42 43 44 45 46 47 48 | **US** 6 7 8 9 10 11 12 13



2197 001 **FASTBACK ENDURANCE ENDURO BLACK**
 EU 39 40 41 42 43 44 45 46 47 48 49 | **US** 6 7 8 9 10 11 12 13 14

2197 013 **FASTBACK ENDURANCE ENDURO BROWN**
 EU 39 40 41 42 43 44 45 46 47 48 | **US** 6 7 8 9 10 11 12 13



GX1 INCORPORATES TECHNOLOGY AND STYLING THAT FEATURES PROTECTION AND PERFORMANCE, PROVIDING AN IMMEDIATE STEP IN COMFORT. HIGH QUALITY MATERIAL AND MADE IN ITALY

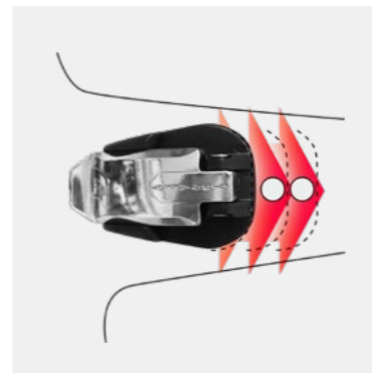
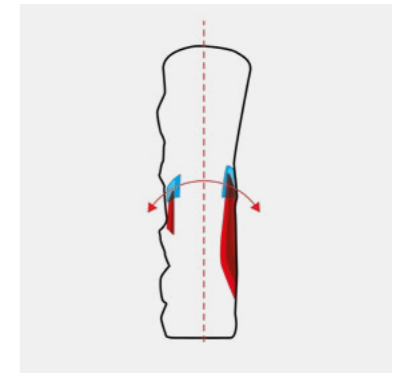
GX1

The latest innovative entry level boot for off-road

STRUCTURAL SUPPORT

The structural support consists of two lugs that slide inside designed pockets

avoiding front and rear overextension while providing flex forwards and backwards, it is anti-torsion.



Closure system consist of 4 light alloy replaceable buckles for an easy, fast and precise closure. The first two buckles on top can be unscrewed and moved in order to accommodate a bigger leg or knee brace.

Exclusive high grip rubber compound sole to grant durability, superior grip and perfect feeling while riding.

On the upper side stamped suede for increased grip and heat resistance

Zach Pichon
2022 ENDURO JR
WORLD
CHAMPION

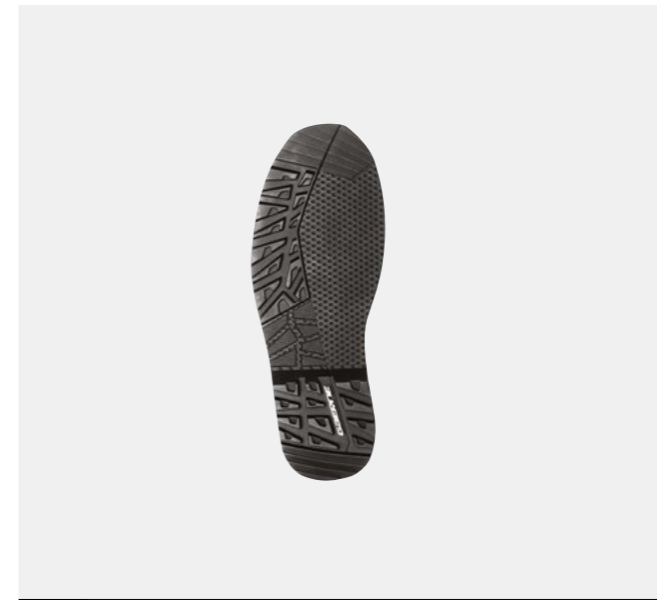


2192 001 **GX1 BLACK**
EU 39 40 41 42 43 44 45 46 47 48 49 | US 6 7 8 9 10 11 12 13 14



2192 019 **GX1 YELLOW BLACK**
EU 39 40 41 42 43 44 45 46 47 48 | US 6 7 8 9 10 11 12 13

MADE IN ITALY
GX1



2194 001 **GX1 ENDURO BLACK**
EU 39 40 41 42 43 44 45 46 47 48 49 | US 6 7 8 9 10 11 12 13 14



2192 015 **GX1 RED BLACK**
EU 39 40 41 42 43 44 45 46 47 48 | US 6 7 8 9 10 11 12 13



2192 018 **GX1 ORANGE BLACK**
EU 39 40 41 42 43 44 45 46 47 48 | US 6 7 8 9 10 11 12 13



2192 014 **GX1 WHITE BLACK**
EU 39 40 41 42 43 44 45 46 47 48 49 | US 6 7 8 9 10 11 12 13 14



2193	GX1 EVO YELLOW BLACK
019	EU 39 40 41 42 43 44 45 46 47 48 US 6 7 8 9 10 11 12 13



2193	GX1 EVO RED/BLACK
015	EU 39 40 41 42 43 44 45 46 47 48 US 6 7 8 9 10 11 12 13



2193	GX1 EVO BLACK
001	EU 39 40 41 42 43 44 45 46 47 48 US 6 7 8 9 10 11 12 13

MADE IN ITALY

GX1 EVO




2193	GX1 EVO BLACK WHITE
014	EU 39 40 41 42 43 44 45 46 47 48 US 6 7 8 9 10 11 12 13

R.j. Hampshire





A PREMIUM BOOT DESIGNED SPECIFICALLY FOR JUNIOR RIDERS, THE FUTURE MOTOCROSS CHAMPIONS! THE ANTI TORSION STRUCTURAL AVOIDS FRONT AND REAR OVER EXTENSIONS WHILE PROVIDING FLEX FORWARDS AND BACKWARDS, SUEDE LEATHER ON THE INSIDE CALF AREA, ALUMINIUM TOE CUP MAKE THESE BOOTS HIGHLY DURABLE. FOUR ALUMINIUM REPLACEABLE AND ADJUSTABLE BUCKLES TO PERSONALIZE THE FITTING.

 Closure system consist of 4 light alloy replaceable buckles for an easy, fast and precise closure. The first two buckles on top can be unscrewed and moved in order to accommodate a bigger leg or knee brace.

MADE IN ITALY

GXJ



2169	GXJ BLACK/ORANGE
008	EU 33 34 35 36 37 38 39 40 41 US 1 2 3 4 5 6 7



2169	GXJ BLACK/WHITE
004	EU 33 34 35 36 37 38 39 40 41 US 1 2 3 4 5 6 7



2169	GXJ GREY/YELLOW FLUO
009	EU 33 34 35 36 37 38 39 40 41 US 1 2 3 4 5 6 7



2169	GXJ BLACK/BLUE
003	EU 33 34 35 36 37 38 39 40 41 US 1 2 3 4 5 6 7



2169	GXJ BLACK/RED
005	EU 33 34 35 36 37 38 39 40 41 US 1 2 3 4 5 6 7



MADE IN ITALY

SGJ

DESIGNED AND DEVELOPED FOR YOUNG RIDERS, THE SG.J OFFERS HIGH LEVELS OF PROTECTION AND COMFORT. MADE IN ITALY WITH EXCLUSIVE HIGH QUALITY MATERIAL. OUTSIDE MALLEOLUS THERMOPLASTIC SHIELD REINFORCEMENT AND SUEDE LEATHER ON THE INSIDE CALF AREA, ALUMINUM TOE CUP AND FOUR REPLACEABLE AND ADJUSTABLE BUCKLES TO PERSONALIZE THE FITTING.



2199	SGJ FLUO YELLOW
009	EU 33 34 35 36 37 38 39 40 41 US 1 2 3 4 5 6 7



2199	SGJ BLACK
001	EU 33 34 35 36 37 38 39 40 41 US 1 2 3 4 5 6 7



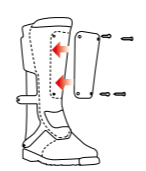
2480 004 GMX MACH 80 WHITE
 EU 39 40 41 42 43 44 45 46 47 48 | US 6 7 8 9 10 11 12 13



2480 001 GMX MACH 80 BLACK
 EU 39 40 41 42 43 44 45 46 47 48 | US 6 7 8 9 10 11 12 13

MADE IN ITALY

GMX MACH 80



4753-001
 GMX MACH 80 FRONTAL PLATES KIT VICTORY



4753-002
 GMX MACH 80 FRONTAL PLATES KIT STARS



4753-003
 GMX MACH 80 FRONTAL PLATES KIT STRIPES



4753-004
 GMX MACH 80 FRONTAL PLATES KIT ORIGIN



THE NEW MOTOCROSS GAERNE BOOT, A MUST HAVE IN THE WARDROBE OF THE MOTORCYCLIST WHO LOVES OFF-ROADING. THE BOOT INTERPRETS THE MX STYLE OF THE 80S, TAKING UP MATERIALS AND SHAPES THAT HAVE CHARACTERIZED ONE OF THE MOST IMPORTANT DECADES OF THIS DISCIPLINE. AT THE SPEED OF THE 80S! THE GMX MACH 80 IS CHARACTERIZED BY THE PRESENCE OF A FRONT PLATE WHOSE GRAPHICS PRESENT THE BRAND IN ITS ORIGINAL FORMS. THE PLATE IS REMOVABLE .



Closure system consist of 4 light alloy replaceable buckles for an easy, fast and precise closure. The first two buckles on top can be unscrewed and moved in order to accommodate a bigger leg or knee brace.



2532 **BALANCE CLASSIC RED BLACK**
055 EU 38 39 40 41 42 43 44 45 46 47 48 49 | **US** 5 6 7 8 9 10 11 12 13 14



2532 **BALANCE CLASSIC YELLOW BLACK**
059 EU 38 39 40 41 42 43 44 45 46 47 48 49 | **US** 5 6 7 8 9 10 11 12 13 14

MADE IN ITALY

BALANCE CLASSIC



2532 **BALANCE CLASSIC BLACK**
001 EU 38 39 40 41 42 43 44 45 46 47 48 49 | **US** 5 6 7 8 9 10 11 12 13 14

THIS TRIAL BOOT IS MADE WITH MICROFIBER TO GRANT LIGHTNESS AND COMFORT. IT IS ALSO WATERPROOF THANKS TO GAERNE DRYTECH MEMBRANE. A GUM RUBBER SOLE COMPLETES THE TASK FOR A GREAT FEEL AND CONTROL OF THE BIKE!

Jeroni Fajardo



THIS EXTREMELY DURABLE BOOT IS MADE WITH A FULL GRAIN OILED LEATHER. IT IS ALSO WATERPROOF THANKS TO THE BREATHABLE MEMBRANE "GAERNE DRYTECH". A GUM RUBBER SOLE COMPLETES THE TASK FOR A GREAT FEEL AND CONTROL OF THE BIKE.

MADE IN ITALY

BALANCE OILED



2522 **BALANCE OILED BROWN**
013 EU 38 39 40 41 42 43 44 45 46 47 48 49 | **US** 5 6 7 8 9 10 11 12 13 14

Gabriel Marcelli

Photo credits: Pep Segales / Repsol Honda Team

MADE IN ITALY

BALANCE PRO TECH

THIS BOOT IS MADE OF LEATHER CONSTRUCTION AND THE SOLE IS GUM RUBBER TO PROVIDE FEEL AND CONTROL.



2524 **BALANCE PRO TECH BLACK**
001 EU 38 39 40 41 42 43 44 45 46 47 48 49 | **US** 5 6 7 8 9 10 11 12 13 14



2524 **BALANCE PRO TECH BROWN**
013 EU 38 39 40 41 42 43 44 45 46 47 48 49 | **US** 5 6 7 8 9 10 11 12 13 14